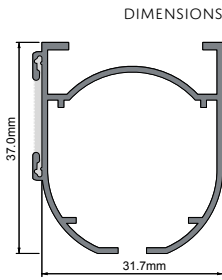


# AUTOMOTO™

## MOTORISED CASSETTE SYSTEM



All Closed Cassette System Kits are compliant to **BS EN 3120:2009+A1:2014** Child Safety Standards.

### PRODUCT INFO

CASSETTE MATERIAL | ALUMINIUM ALLOY 6060/T6

### PRODUCT DETAILS

**RENAISSANCE CLOSED CASSETTE SYSTEM CAN BE EASILY MOTORISED BY USING OUR BESPOKE MOTOR AND ACCESSORIES THAT INTEGRATE VERY NEATLY AND COMPACTLY WITHIN THE CASSETTE HEADRAIL.**

THE OPERATION OF THE BLIND SYSTEM CAN BE CONTROLLED BY VARIOUS MEANS; WITH OPTIONS INCLUDING LIGHT SENSORS, TIME SENSORS, MANUAL SWITCHING OR REMOTE CONTROL. VARIOUS INTELLIGENT SYSTEMS ARE ALSO AVAILABLE FOR OPERATING EITHER INDIVIDUAL OR MULTIPLE SYSTEMS.

TECHNICAL SPECIFICATION INCLUDING WIRING DETAILS AVAILABLE ON REQUEST. WIRING SPECIFICATIONS/MULTIPLE BLIND OPERATION: SAVINGS CAN BE ACHIEVED IF OPERATING MORE THAN ONE BLIND AT A TIME, AS NOT ALL COMPONENTS NEED TO BE REPEATED FOR EACH BLIND. PRICE ON APPLICATION – TAILORED TO YOUR SPECIFIC REQUIREMENTS. PLEASE ASK FOR DETAILS AND PRICES. **NOTE: THE MINIMUM WIDTH FOR AN AUTOMOTO CASSETTE IS 40CM**

### FAST FIT, TAB-LOCK CORD ROLLER

THE UNIQUELY DESIGNED FAST-FIT TAB LOCK CORD ROLLER FROM RENAISSANCE WITH AMAZING TIME-SAVING FEATURES NOW AVAILABLE IN AUTOMOTO KITS!



#### AUTO-LOCATE

THE UNIQUELY DESIGNED CHAMFERED MECHANISM AUTOMATICALLY ADJUSTS TO FIT THE HEADRAIL AXLE BAR.



#### TAB-LOCK

TO SECURELY LOCK THE ROLLER IN PLACE SIMPLY TWIST THE EASY-LOCK TAB 90° IN EITHER DIRECTION.



#### QUICK ADJUST

SO SIMPLE TO ADJUST – JUST TWIST THE TAB AND SLIDE IN EITHER DIRECTION TO YOUR DESIRED POSITION.



**NEW**  
TAB-LOCK  
**FAST FIT**  
CORD ROLLER

**NO**  
SCREWS  
REQUIRED

### KEY FEATURES



REMOTE OPERATION



IN STOCK DELIVERY



MADE TO MEASURE



KITS AVAILABLE

### IDEAL FOR USE IN



HOMES & DOMESTIC



OFFICES & HOTELS

### COLOUR OPTIONS

W  
WHITE

ALL RENAISSANCE CLOSED CASSETTE KITS NOW INCLUDE: **CLIP-IN ADJUSTABLE CORD STOPPERS**



- SIMPLE TO USE
- INHERENTLY CHILD SAFE
- NO CHAIN REQUIRED - IDEAL FOR CARE HOMES

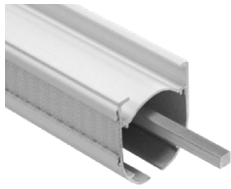
### FEATURES INCLUDE

- NEAT ENCLOSED INTEGRATED SYSTEM ONLY PROTRUDES 38MM WHEN FACE FIXED
- PRE-ASSEMBLED TO REQUIRED SIZE.
- SIMPLE TO OPERATE LOW NOISE EMISSION
- BLINDS CAN BE EASILY REMOVED FOR WASHING

# AUTOMOTO™

## MOTORISED CASSETTE SYSTEM

### KIT COMPONENTS



HEADRAIL SKU - 17CLHRAX,  
5MM SQUARE AXLE BAR  
SKU - 17CLHRAX



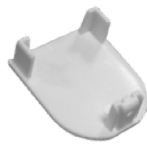
**NEW**  
TAB-LOCK  
**FAST FIT**  
CORD ROLLER  
FAST-FIT TAB LOCK CORD  
ROLLERS WITH 3.5M CORD  
SKU - 17CTCR35



HANDHELD MULTI-CHANNEL  
REMOTE + HANGER  
SKU - 17AMRC15



MOTOR & RECEIVER KIT PRE-INSTALLED  
INSIDE THE HEADRAIL  
SKU - 17AMMOTR



END CAPS X1  
SKU - 17CLEC1W



SMART HOME HUB  
SKU - 16GAASHH



CHILD SAFE CLIP-IN/SEW-IN  
ADJUSTABLE CORD STOPPERS  
SKU - 58WACCCC - 100PCS  
SKU - 58WACCKC - 1000PCS



WHITE ALUMINIUM D-SECTION  
BOTTOM WEIGHT BAR  
SKU - 17HVDW\_W - "REPLACE \_ WITH 3  
FOR 300CM OR 6 FOR 600CM"



LEVER BRACKETS WALL/  
CEILING FIX  
SKU - 17CLS81W

### POWER SUPPLY OPTIONS

#### MAINS WIRE - POWERED KIT FOR WIRED SYSTEMS



240/12V MAINS POWER ADAPTER  
SKU - 17AMMPAW

#### BATTERY - POWERED KIT FOR BATTERY SYSTEMS



USB-C CHARGEABLE BATTERY WITH CLIPS  
SKU - 17AMS8PC



USB-A TO USB-C PLUG  
& CHARGER  
SKU - 17AMP8BP

### AUTOMOTO – MADE-TO-MEASURE MOTORISED CASSETTE KITS

| COMPONENTS                                      | KIT SIZES UP TO |            |             |             |             |             |             |              |
|---|-----------------|------------|-------------|-------------|-------------|-------------|-------------|--------------|
|   | 60cm (24")      | 90cm (36") | 120cm (48") | 150cm (59") | 180cm (71") | 200cm (79") | 250cm (98") | 300cm (118") |
| CLOSED CASSETTE SYSTEM HEADRAIL                 | 1 x 60cm        | 1 x 90cm   | 1 x 120cm   | 1 x 150cm   | 1 x 180cm   | 1 x 200cm   | 1 x 250cm   | 1 x 300cm    |
| ALUMINIUM BOTTOM WEIGHT BAR D-SECTION           | 1 x 60cm        | 1 x 90cm   | 1 x 120cm   | 1 x 150cm   | 1 x 180cm   | 1 x 200cm   | 1 x 250cm   | 1 x 300cm    |
| SQUARE AXLE BARS                                | 1 x 60cm        | 1 x 90cm   | 1 x 120cm   | 1 x 150cm   | 1 x 180cm   | 1 x 200cm   | 1 x 250cm   | 1 x 300cm    |
| 20MM LOOP TAPE                                  | 1 x 60cm        | 1 x 90cm   | 1 x 120cm   | 1 x 150cm   | 1 x 180cm   | 1 x 200cm   | 1 x 250cm   | 1 x 300cm    |
| END CAP*  | 2               | 2          | 2           | 2           | 2           | 2           | 2           | 2            |
| 12V DC MOTOR                                    | 1               | 1          | 1           | 1           | 1           | 1           | 1           | 1            |
| MOTOR MOUNTING INSERTS<br>- INCLUDED WITH MOTOR | 2               | 2          | 2           | 2           | 2           | 2           | 2           | 2            |
| SHAFT ADAPTERS - INCLUDED WITH MOTOR            | 2               | 2          | 2           | 2           | 2           | 2           | 2           | 2            |
| FAST-FIT TAB-LOCK CORD ROLLERS INC 3.5M         | 2               | 3          | 3           | 4           | 5           | 5           | 6           | 7            |
| CLIP-IN ADJUSTABLE CORD STOPPERS                | 2               | 3          | 3           | 4           | 5           | 5           | 6           | 7            |
| LEVER BRACKETS (FACE OR CEILING FIX)            | 2               | 2          | 3           | 3           | 4           | 4           | 5           | 6            |
| MULTI-CHANNEL REMOTE (INC BATTERY)              | 1               | 1          | 1           | 1           | 1           | 1           | 1           | 1            |
| AUTOMOTO MAINS WIRE POWERED KIT CODE**          | 17AM-WM060      | 17AM-WM090 | 17AM-WM120  | 17AM-WM150  | 17AM-WM180  | 17AM-WM200  | 17AM-WM250  | 17AM-WM300   |
| AUTOMOTO BATTERY POWERED KIT CODE**             | 17AM-BM060      | 17AM-BM090 | 17AM-BM120  | 17AM-BM150  | 17AM-BM180  | 17AM-BM200  | 17AM-BM250  | 17AM-BM300   |

Packed: 1 px / Outer 10 | Min Qty:1

\* Note: If purchasing a motorised kit for self assembly, the chain and chain house will not be required. Please order an extra end cap for this.  
\*\*Wired Power Supply Kits include a 240/12V Mains Power Adapter. Battery Powered Kits include a USB-C Chargeable Battery with Clips + USB-A to USB-C Plug & Charger

Orders must be placed in writing with size specified in mm. For alternative control options, requirements must be specified including type of control, number of blinds, sizes and weight of blinds and whether group switched or individually controlled. Feel free to contact us to discuss your requirements. Accessories images shown may differ subject to specification.