

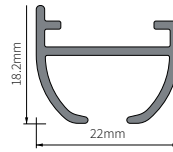


SILENT GLIDE

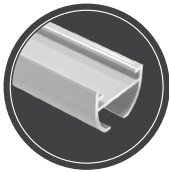
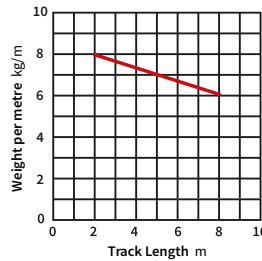
SEMI-CIRCULAR PROFILE TRACK



DIMENSIONS



OPTIMUM WEIGHT CHART



KG
HEAVY WEIGHT
CURTAINS

PRODUCT INFO

MATERIAL	ALUMINIUM ALLOY 6060/T6
WEIGHT	224 G/M
TRACK AND SIZES	6M SINGLE LENGTHS ONLY
BENDING	BENDING CAN BE DONE TO A MINIMUM 10CM RADIUS FOR 90° ANGLES AND MINIMUM 30CM FOR CONTINUOUS CURVE.
BENDING METHODS	CAN BE BENT WITH OUR IN-HOUSE TRACK BENDING SERVICE: SILENT GLIDE SINGLE ANGLE BEND CODE: 16SGBEND SILENT GLIDE CONTINUOUS CURVE CODE: 16SGCONT
TRACK MAINTENANCE	WE RECOMMEND THAT THE TRACK IS KEPT CLEAN AND DUST FREE. RE-SILICONISATION IS ALSO RECOMMENDED TO PROLONG THE SMOOTH RUNNING OF THE GLIDERS

KEY FEATURES

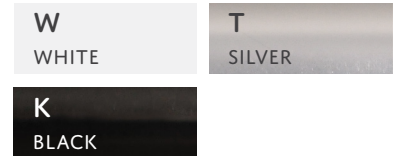


IDEAL FOR USE IN



COLOUR OPTIONS

PLEASE SUBSTITUTE '_' IN THE ORDER CODE WITH YOUR COLOUR REF LETTERS OF CHOICE



KIT COMPONENTS



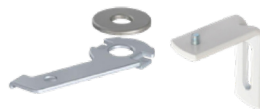
PROFILE TRACK



END CAPS X 2



LARGE TWIST FIT
END STOPS X 2



SILENT GLIDE CEILING BRACKETS*
FOR WALL FIX ADD L-EXTENSION
BRACKETS TO YOUR ORDER



STANDARD GLIDERS
FOR 6MM GROOVE



6MM SURGE GLIDERS ON A STRING
CHOOSE 60MM OR 80MM SPACING

GLIDER OPTIONS

SILENT GLIDE – COMPLETE KITS

COMPONENTS	KIT SIZES							
	1.00m (3'3")	1.50m (4'11")	2.00m (6'7")	2.50m (8'2)	3.00m* (9'10")	4.00m* (13'1")	5.00m* (16'5")	6.00m* (19'8")
PROFILE TRACK	1 x 1.00m	1 x 1.50m	1 x 2.00m	1 x 2.50m	2 x 1.50m	2 x 2.00m	2 x 2.50m	2 x 3.00m
BRACKETS**	3	4	5	6	7	9	11	13
END CAPS	2	2	2	2	2	2	2	2
STANDARD GLIDERS^	10	16	20	26	30	40	50	60
LARGE TWIST END STOPS	2	2	2	2	2	2	2	2
STANDARD KIT CODE	16SGUS100_	16SGUS150_	16SGUS200_	16SGUS250_	16SGUS300_	16SGUS400_	16SGUS500_	16SGUS600_
60MM SURGE CODE	16SGU6100_	16SGU6150_	16SGU6200_	16SGU6250_	16SGU6300_	16SGU6400_	16SGU6500_	16SGU6600_
80MM SURGE CODE†	16SGU8100_	16SGU8150_	16SGU8200_	16SGU8250_	16SGU8300_	16SGU8400_	16SGU8500_	16SGU8600_

Packed: 1 px / Outer 5 | Min Qty:1

* Denotes 2 piece profile. All kits include fittings. ** Ceiling Lever Brackets included as standard in all kits, L-Extension Brackets required for Wall Fix. ^ For Surge the gliders are replaced with gliders on a string – please state your required Surge spacing at time of order.