

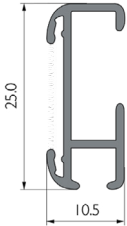


VELTRACK

CURTAIN BLACKOUT SOLUTION



DIMENSIONS



KEY FEATURES



MADE TO MEASURE



IN STOCK DELIVERY



SURGE WAVE COMPATIBLE

IDEAL FOR USE IN



HOMES & DOMESTIC



OFFICES & HOTELS

COLOUR OPTIONS

W
WHITE

PRODUCT INFO

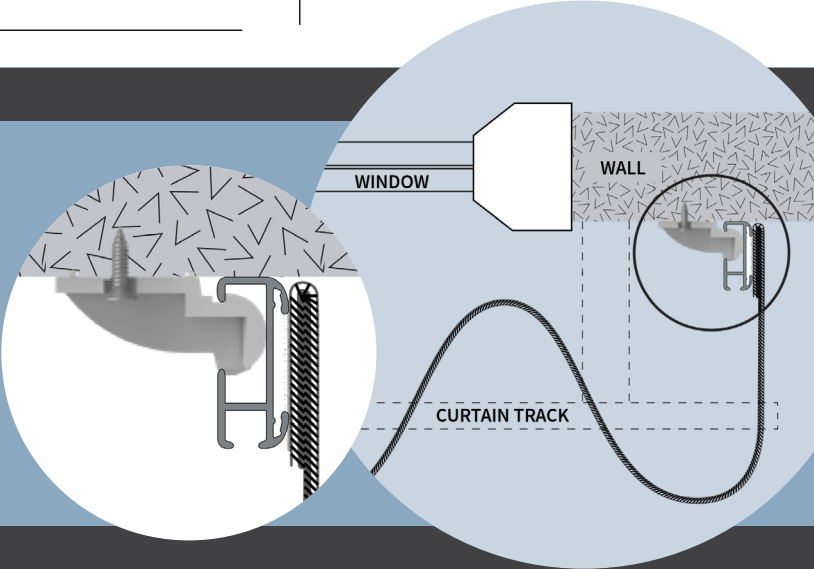
MATERIAL	ALUMINIUM ALLOY 6060/T6
TRACK AND SIZES	3M AND 6M SINGLE LENGTHS AVAILABLE

HOW IT WORKS

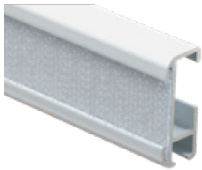
VELTRACK

USING STANDARD CEILING FIX BRACKETS TO FIX VELTRACK EITHER SIDE OF THE WINDOW, CURTAINS CAN BE HELD FLUSH TO THE WALL TO PREVENT LIGHT COMING THROUGH.

THIS DRAWING SHOWS VELTRACK SHOWN WITH THE SURGEWAVE SYSTEM TRACK VIEWED FROM ABOVE



KITS INCLUDE



VELTRACK PROFILE



VELTRACK END CAP



VELTRACK JOINER



STANDARD CEILING BRACKET (WITH HOLE)



LOOP TAPE



VELTRACK

CURTAIN BLACKOUT SOLUTION

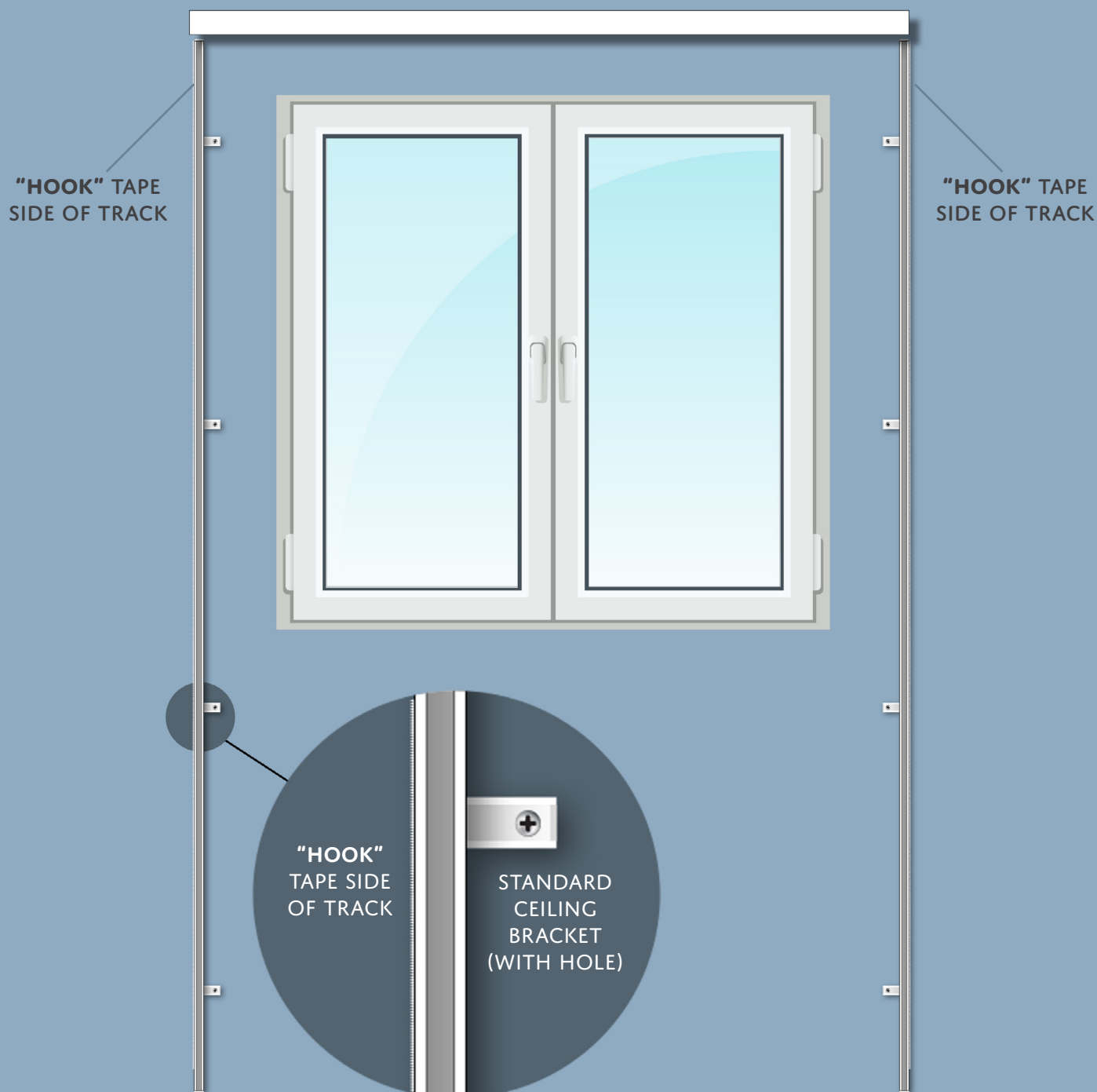


RENAISSANCE
CONTRACT SOLUTIONS

HOW TO INSTALL

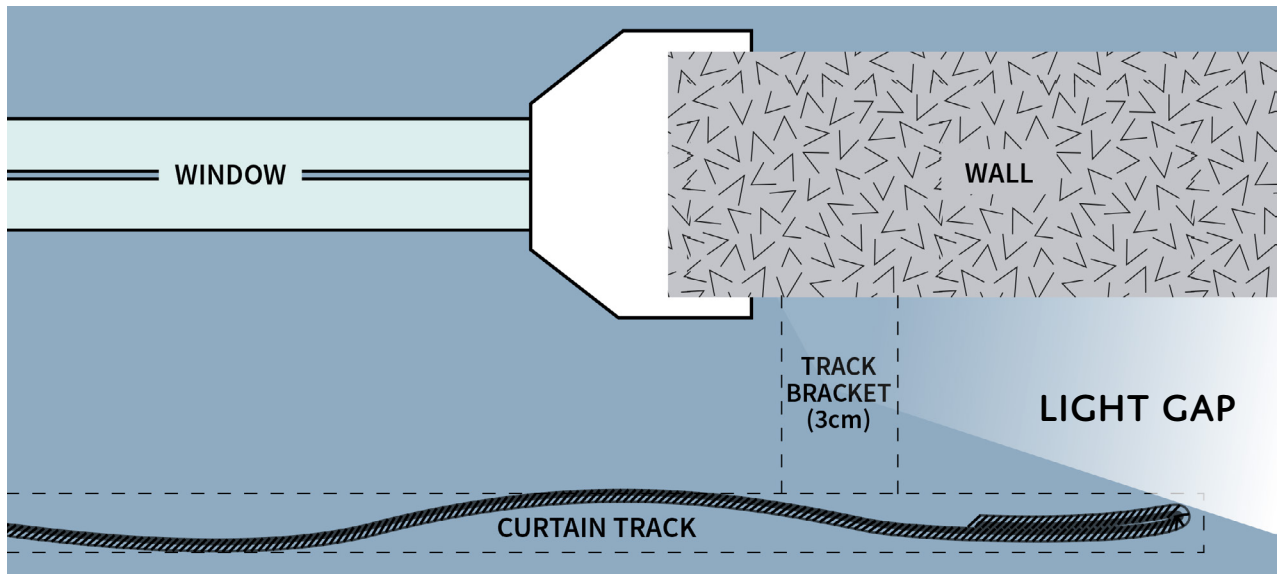
INSTALL YOUR LENGTHS OF VELTRACK RUNNING VERTICALLY EACH SIDE OF YOUR WINDOW FRAME WITH 'HOOK' SIDE OF THE HOOK & LOOP TAPE OF THE RAIL FACING OUTSIDE – AS SHOWN BELOW.

WITH THE 'LOOP' SIDE OF THE HOOK & LOOP TAPE SEWN TO THE OUTSIDE EDGE OF YOUR CURTAINS WHICH CAN NOW BE NEATLY HELD IN PLACE ON THE RAIL, FLUSH TO THE WALL.



HOW IT WORKS - STANDARD TRACK

STANDARD HANGING CURTAINS ALLOW LIGHT TO ESCAPE BETWEEN THE WALL/CURTAIN (VIEWED FROM ABOVE)



HOW IT WORKS VELTRACK + SURGEWAVE SYSTEM TRACK

WITH VELTRACK AND SURGEWAVE SYSTEM NOW INSTALLED YOUR CURTAINS ARE NEATLY HELD IN PLACE FLUSH TO THE WALL. NO MORE LIGHT GAP!

