

RENAISSANCE



Roman Blind Systems & Accessories



FAST»»FIT
TAB-LOCK CORD ROLLER

Available in all Renaissance
Closed Cassette System kits

AUTOMOTO™
MOTORIZED ROMAN BLINDS

NOW AVAILABLE IN ALL CLOSED CASSETTE SYSTEM KITS AS STANDARD!

FAST FIT

TAB-LOCK CORD ROLLER

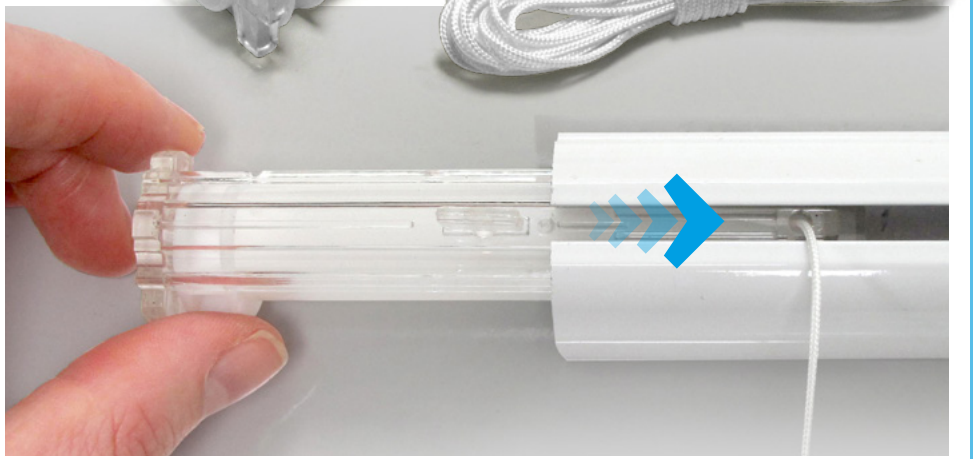


HOW IT WORKS



AUTO-LOCATE

The uniquely designed chamfered inner mechanism will automatically adjust to fit the headrail axle bar.



TAB-LOCK

To lock the roller in place simply twist the Easy-Lock Tab 90° in either direction. Simple as that!

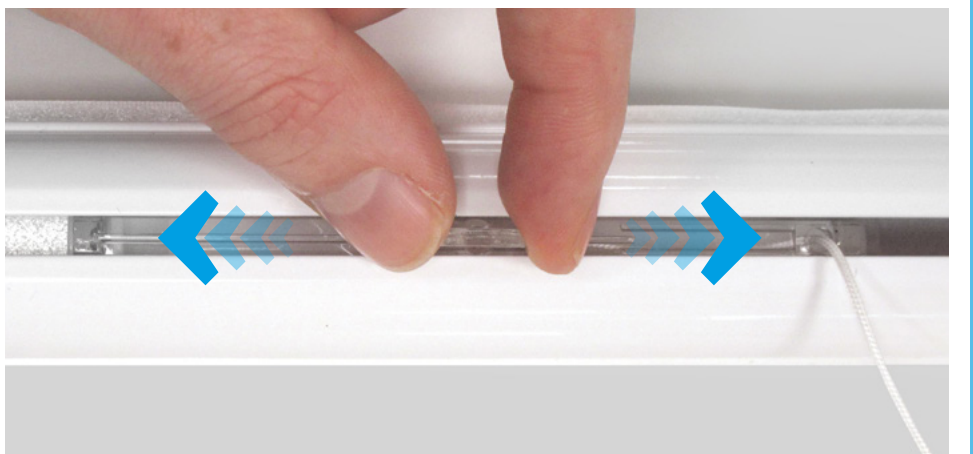


**NO SCREWS
REQUIRED**



QUICK ADJUST

It's so simple to adjust – just twist the tab and slide in either direction to reach your desired position.



Key to icons

Ideal for use in:

HOMES & DOMESTIC
Track can be used in everyday living environment



OFFICES & HOTELS
Designed for use in more frequent use or industrial areas



Key Features:

MADE TO MEASURE
Available to order as a complete kit made to your specific size.



IN-STOCK DELIVERY
Product is available for next-day-delivery



REMOTE OPERATION
Motorised or automatic product operated by handheld remote/switch



KITS AVAILABLE
Supplied as complete ready-to-fit kit with all fixtures & fittings



CHAIN RELEASE
A breakaway device for use with chains to make them Child Safe



CHILD SAFE APPROVED
Chain/corded product which has been Child Safe tested & approved



Weight indicator for track capacity



*Tracks labelled as HEAVY must have adequate fixing in the substrate.



ROMAN BLIND SYSTEMS & ACCESSORIES

Motorised Closed Cassette System

| | |
|-----------|-----|
| AutoMoto™ | 4-5 |
|-----------|-----|

Closed Cassette System

| | |
|-------------------|-------|
| Workroom Kit | 6-7 |
| Safe Release™ Kit | 8-9 |
| TOTAL DIY™ Kit | 10-11 |

Roman Blind General Accessories

| | |
|----------------------------|----|
| Bottom Weight Bars | 12 |
| Roman Blind Bars | 12 |
| Hook & Loop Tapes | 12 |
| Operating Chains – Metal | 13 |
| Operating Chains – Plastic | 13 |
| Roman Blind Tape | 14 |

Roman Blind Child Safety

| | |
|------------------------------------|----|
| Chain and Rear Cord Safety Devices | 15 |
|------------------------------------|----|

WHY CHOOSE RENAISSANCE?



EXPERT ADVICE

Our product experts are always on hand to solve challenges with even the most complex window dressing solutions.



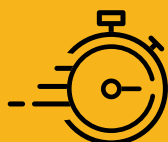
ENDLESS CHOICE

Numerous design options and colour choices so you can personalise your installation to a specification to suit you.



TAILORED FIT

Our full made-to-measure service & track bending facility ensures our products are made to your exact specification.



FAST DELIVERY

Need it yesterday? With large stock holding on popular products we offer next day delivery when required.



THERE & THEN

Individual tracks can be collated and labelled for ease of fitting on-site – delivered to where and when it's needed.



QUALITY ASSURED

All Renaissance products come backed with a full 5 Year Guarantee to give you complete peace of mind.

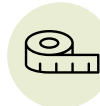


Motorised Cassette System **AutoMoto™**

Key Features:



IN-STOCK DELIVERY



MADE TO MEASURE



KITS AVAILABLE



REMOTE OPERATION

Ideal for use in:



HOMES & DOMESTIC

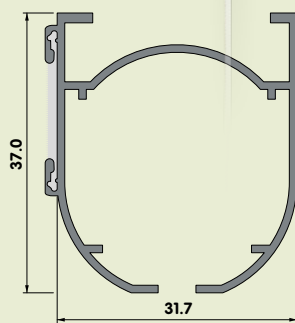


OFFICES & HOTELS



CHILD SAFE PRODUCT

FAST»»FIT
TAB-LOCK CORD ROLLER



Cassette Material
Aluminium alloy 6060/T6



- ✓ Simple to use and is inherently child safe
- ✓ No chain required – ideal for care homes

Renaissance Closed Cassette System can be easily motorised by using our bespoke motor and accessories that integrate very neatly and compactly within the cassette headrail.

The operation of the blind system can be controlled by various means; with options including light sensors, time sensors, manual switching or remote control.

Various intelligent systems are also available for operating either individual or multiple systems.

Features Include:

- Neat enclosed integrated system only protrudes 38mm when face fixed
- Pre-assembled to required size.
- Simple to operate low noise emission
- Blinds can be easily removed for washing

Technical specification including wiring details available on request.

Wiring specifications/multiple blind operation: Savings can be achieved if operating more than one blind at a time, as not all components need to be repeated for each blind. Price on application – tailored to your specific requirements. Please ask for details and prices.

FAST»»FIT
TAB-LOCK CORD ROLLER



The uniquely designed Fast-Fit Tab Lock Cord Roller from Renaissance with amazing time-saving features now available in all kits!



NO SCREWS REQUIRED



AUTO-LOCATE

The uniquely designed chamfered mechanism automatically adjusts to fit the headrail axle bar.



TAB-LOCK

To securely lock the roller in place simply twist the Easy-Lock Tab 90° in either direction.



QUICK ADJUST

So simple to adjust – just twist the tab and slide in either direction to your desired position.



All Closed Cassette System Kits are compliant to BS EN 3120:2009+A1:2014 Child Safety Standards.

AutoMoto Motorised Kits include:



Headrail + 5mm Square Axle Bar + Loop Tape



Fast-Fit Tab Lock Cord Rollers with 3.5m Cord



'My' Hand Held Remote + Hanger Single Channel

INCLUDES
Easy-to-follow instructions on how to programme your Hand Held Remote



End Caps x1



Lever Brackets wall/ceiling fix



White Aluminium D-Section Bottom Weight Bar



Child Safe Clip-in/Sew-in Adjustable Cord Stoppers



Motor & Receiver Kit Pre-packed inside the Headrail

AutoMoto Roman Blind Motorised Cassette Kits

| Components | Kit Sizes | | | | | | | |
|----------------------------------------------|-------------------|-------------------|-------------------|-------------------|-------------------|-------------------|-------------------|-------------------|
| | 60cm (24") | 90cm (36") | 120cm (48") | 150cm (59") | 180cm (71") | 200cm (79") | 250cm (98") | 300cm (118") |
| Closed Cassette System Headrail | 1 x 60cm | 1 x 90cm | 1 x 120cm | 1 x 150cm | 1 x 180cm | 1 x 200cm | 1 x 250cm | 1 x 300cm |
| Aluminium Bottom Weight Bar D-Section | 1 x 60cm | 1 x 90cm | 1 x 120cm | 1 x 150cm | 1 x 180cm | 1 x 200cm | 1 x 250cm | 1 x 300cm |
| Square Axle Bars | 1 x 60cm | 1 x 90cm | 1 x 120cm | 1 x 150cm | 1 x 180cm | 1 x 200cm | 1 x 250cm | 1 x 300cm |
| 20mm Loop Tape | 1 x 60cm | 1 x 90cm | 1 x 120cm | 1 x 150cm | 1 x 180cm | 1 x 200cm | 1 x 250cm | 1 x 300cm |
| End Cap† | 2 | 2 | 2 | 2 | 2 | 2 | 2 | 2 |
| 12v DC Motor | 1 | 1 | 1 | 1 | 1 | 1 | 1 | 1 |
| Motor Mounting Inserts | 2 | 2 | 2 | 2 | 2 | 2 | 2 | 2 |
| Shaft Adapters | 2 | 2 | 2 | 2 | 2 | 2 | 2 | 2 |
| Fast-Fit Tab-Lock Cord Rollers Inc 3.5m cord | 2 | 3 | 3 | 4 | 5 | 5 | 6 | 7 |
| Clip-In Adjustable Cord Stoppers | 2 | 3 | 3 | 4 | 5 | 5 | 6 | 7 |
| Lever Brackets (face or ceiling fix) | 2 | 2 | 3 | 3 | 4 | 4 | 4 | 6 |
| Single Channel remote Control (inc Battery) | 1 | 1 | 1 | 1 | 1 | 1 | 1 | 1 |
| AutoMoto Wired Power Supply Kit Code* | 17AM-WM060 | 17AM-WM090 | 17AM-WM120 | 17AM-WM150 | 17AM-WM180 | 17AM-WM200 | 17AM-WM250 | 17AM-WM300 |
| AutoMoto Battery Powered Kit Code* | 17AM-BM060 | 17AM-BM090 | 17AM-BM120 | 17AM-BM150 | 17AM-BM180 | 17AM-BM200 | 17AM-BM250 | 17AM-BM300 |

Packed: 1 px/Outer 10 Min Qty: 1

Fitting Instructions, Safety notice and Safety label included in every kit.

† Note: If purchasing a motorised kit for self assembly, the chain and chain house will not be required. Please order an extra end cap for this.

*Note: Alternative Chains can be included for the additional chain cost – see page 154 & 155 for full detail on Chains available.

**Made-to-measure includes a cut to your required size and includes a Chrome Chain. Swap your Chrome Chain to a Plastic chain of the same size for no extra charge.

Orders must be placed in writing with size specified in mm. For alternative control options, requirements must be specified including type of control, number of blinds, sizes and weight of blinds and whether group switched or individually controlled. Feel free to contact us to discuss your requirements. Accessories images shown may differ subject to specification.

Power Supply Options



240/12v Mains Power Supply



12v Reloadable Battery Tube + Clips

Takes 8x AA Batteries

Remote Control Alternatives



Multi-Channel Handheld Remote



Wall-Mounted Control/Timer

Alternative Control Options:

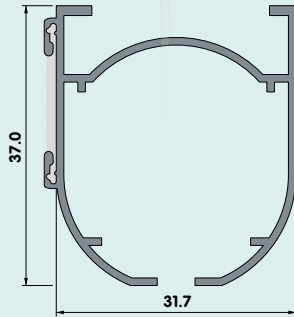
- Multi Channel Remote • Light sensitive • Time controlled • Multiple blinds

Note: Combinations of these options are available – please contact us for your bespoke requirements.



Roman Blind Cassette System Workroom Kit

FAST»»FIT
TAB-LOCK CORD ROLLER



Cassette Material
Aluminium alloy 6060/T6

Key Features:



IN-STOCK DELIVERY



MADE TO MEASURE



KITS AVAILABLE

Ideal for use in:



HOMES & DOMESTIC



OFFICES & HOTELS



CHILD SAFE APPROVED



Roman Blind Cassette System Workroom Kit

(See opposite for Kit components)

FAST»»FIT
TAB-LOCK CORD ROLLER



**NO SCREWS
REQUIRED**

The uniquely designed Fast-Fit Tab Lock Cord Roller from Renaissance with amazing time-saving features now available in all kits!



AUTO-LOCATE

The uniquely designed chamfered mechanism automatically adjusts to fit the headrail axle bar.



TAB-LOCK

To securely lock the roller in place simply twist the Easy-Lock Tab 90° in either direction.

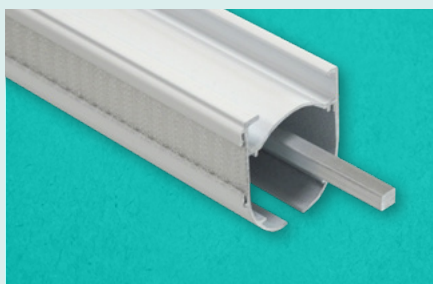


QUICK ADJUST

So simple to adjust – just twist the tab and slide in either direction to your desired position.



Kits include:



Headrail + 5mm Square Axle Bar + Loop Tape



Fast-Fit Tab Lock Cord Rollers with 3m Cord



Workroom Kit Chain Housing 1:4 Ratio



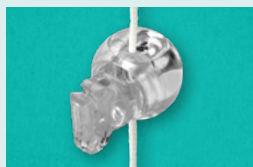
End Cap



Lever Brackets wall/ceiling fix



White Aluminium D-Section Bottom Weight Bar



Child Safe Clip-in/Sew-in Adjustable Cord Stoppers



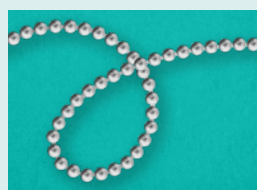
Child Safety P-Clip Includes Safety Warning Labels

Roman Blind Cassette System Workroom Kits

| Components | Kit Sizes | | | | | | | |
|----------------------------------------------|------------|------------|-------------|-------------|-------------|-------------|-------------|--------------|
| | 60cm (24") | 90cm (36") | 120cm (48") | 150cm (59") | 180cm (71") | 200cm (79") | 250cm (98") | 300cm (118") |
| Closed Cassette System Headrail | 1 x 60cm | 1 x 90cm | 1 x 120cm | 1 x 150cm | 1 x 180cm | 1 x 200cm | 1 x 250cm | 1 x 300cm |
| Aluminium Bottom Weight Bar D-Section | 1 x 60cm | 1 x 90cm | 1 x 120cm | 1 x 150cm | 1 x 180cm | 1 x 200cm | 1 x 250cm | 1 x 300cm |
| Square Axle Bar | 1 x 60cm | 1 x 90cm | 1 x 120cm | 1 x 150cm | 1 x 180cm | 1 x 200cm | 1 x 250cm | 1 x 300cm |
| 20mm Loop Tape | 1 x 60cm | 1 x 90cm | 1 x 120cm | 1 x 150cm | 1 x 180cm | 1 x 200cm | 1 x 250cm | 1 x 300cm |
| End Cap | 1 | 1 | 1 | 1 | 1 | 1 | 1 | 1 |
| 1:4 Closed Cassette System Chain Guide | 1 | 1 | 1 | 1 | 1 | 1 | 1 | 1 |
| 100cm Continuous Chain* | 1 | 1 | 1 | 1 | 1 | 1 | 1 | 1 |
| Fast-Fit Tab-Lock Cord Rollers Inc 3.5m cord | 2 | 3 | 3 | 4 | 5 | 5 | 6 | 7 |
| Clip-In Adjustable Cord Stoppers | 2 | 3 | 3 | 4 | 5 | 5 | 6 | 7 |
| Lever Brackets (wall or ceiling fix) | 2 | 2 | 3 | 3 | 4 | 4 | 4 | 6 |
| Safety Cord Guide (P-Clip) | 1 | 1 | 1 | 1 | 1 | 1 | 1 | 1 |
| Child Safe Awareness Safety Labels | 1 | 1 | 1 | 1 | 1 | 1 | 1 | 1 |

Packed: 1 px/Outer 10 Min Qty: 1
 Fitting Instructions, Safety notice & safety label included in every kit.

* Kit Operation Chain Options



Chrome Metal Chain



White Plastic Spaced Chain

Optional Kit Alternatives



Chain Housing 1:2 Ratio



Click/Spring Release Bracket

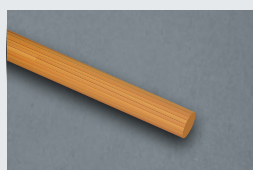


Sew-in Adjustable Cord Stoppers

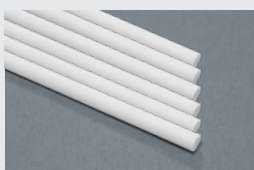
Also Available from Renaissance



Hollow Plastic Bars



Wood Dowel Bars



Fibre Glass Rods Kits



Roman Blind Tape



Alternative Operating Chains
 Various colour and size available



Roman Blind Cassette System **Safe-Release™ Kit**

Key Features:



IN-STOCK DELIVERY



MADE TO MEASURE



KITS AVAILABLE



CHAIN RELEASE

Ideal for use in:



HOMES & DOMESTIC

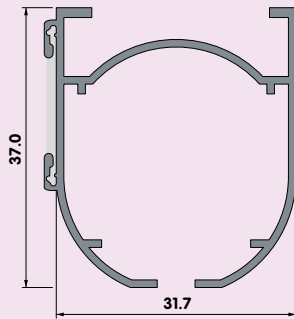


OFFICES & HOTELS



CHILD SAFE APPROVED

FAST»»FIT
TAB-LOCK CORD ROLLER

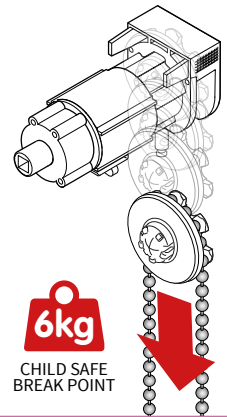


Cassette Material
Aluminium alloy 6060/T6

How it works **Safe-Release™**

The specially designed Spring-Wheel will release from the Safe-Release Gear Housing together with the chain to meet the 6kg testing requirement for Child Safe regulations.

To reconnect just re-align the Spring-Wheel & Chain up with the Safe-Release Housing and push back into place from below.



Roman Blind Cassette System Safe-Release™ Kit

(See opposite for Kit components)

FAST»»FIT
TAB-LOCK CORD ROLLER



NO SCREWS REQUIRED

The uniquely designed Fast-Fit Tab Lock Cord Roller from Renaissance with amazing time-saving features now available in all kits!



AUTO-LOCATE

The uniquely designed chamfered mechanism automatically adjusts to fit the headrail axle bar.



TAB-LOCK

To securely lock the roller in place simply twist the Easy-Lock Tab 90° in either direction.



QUICK ADJUST

So simple to adjust – just twist the tab and slide in either direction to your desired position.



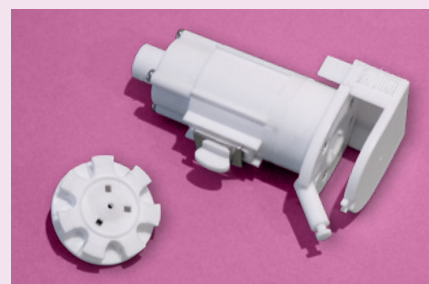
Kits include:



Headrail + 5mm Square Axle Bar + Loop Tape



Fast-Fit Tab Lock Cord Rollers with 3m Cord



Safe-Release™ Chain Housing 1:4 Ratio



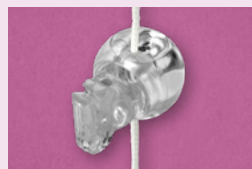
End Cap



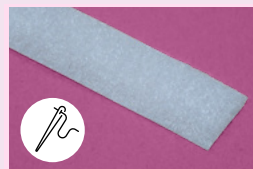
Lever Brackets wall/ceiling fix



White Aluminium D-Section Bottom Weight Bar



Child Safe Clip-in/Sew-in Adjustable Cord Stoppers



20mm Loop Tape (Sew-on)

Roman Blind Cassette System Safe-Release™ Workroom Kits

| Components | Kit Sizes | | | | | | | |
|----------------------------------------------|------------|------------|-------------|-------------|-------------|-------------|-------------|--------------|
| | 60cm (24") | 90cm (36") | 120cm (48") | 150cm (59") | 180cm (71") | 200cm (79") | 250cm (98") | 300cm (118") |
| Closed Cassette System Headrail | 1 x 60cm | 1 x 90cm | 1 x 120cm | 1 x 150cm | 1 x 180cm | 1 x 200cm | 1 x 250cm | 1 x 300cm |
| Aluminium Bottom Weight Bar D-Section | 1 x 60cm | 1 x 90cm | 1 x 120cm | 1 x 150cm | 1 x 180cm | 1 x 200cm | 1 x 250cm | 1 x 300cm |
| Square Axle Bar | 1 x 60cm | 1 x 90cm | 1 x 120cm | 1 x 150cm | 1 x 180cm | 1 x 200cm | 1 x 250cm | 1 x 300cm |
| 20mm Loop Tape | 1 x 60cm | 1 x 90cm | 1 x 120cm | 1 x 150cm | 1 x 180cm | 1 x 200cm | 1 x 250cm | 1 x 300cm |
| End Cap | 1 | 1 | 1 | 1 | 1 | 1 | 1 | 1 |
| Safe-Release™ Chain Housing 1:4 Ratio | 1 | 1 | 1 | 1 | 1 | 1 | 1 | 1 |
| 100cm Continuous Chain* | 1 | 1 | 1 | 1 | 1 | 1 | 1 | 1 |
| Fast-Fit Tab-Lock Cord Rollers Inc 3.5m cord | 2 | 3 | 3 | 4 | 5 | 5 | 6 | 7 |
| Clip-In Adjustable Cord Stoppers | 2 | 3 | 3 | 4 | 5 | 5 | 6 | 7 |
| Lever Brackets (wall or ceiling fix) | 2 | 2 | 3 | 3 | 4 | 4 | 4 | 6 |
| Child Safe Awareness Safety Labels | 1 | 1 | 1 | 1 | 1 | 1 | 1 | 1 |

Packed: 1 px/Outer 10 Min Qty: 1
 Fitting Instructions, Safety notice & safety label included in every kit.

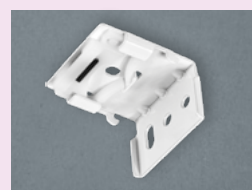
* Kit Operation Chain Options



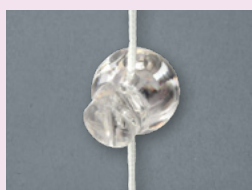
Chrome Metal Chain



White Plastic Spaced Chain



Click/Spring Release Bracket



Sew-in Adjustable Cord Stoppers

Optional Kit Alternatives

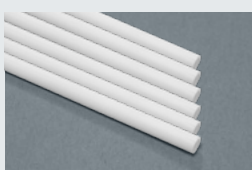
Also Available from Renaissance



Hollow Plastic Bars



Wood Dowel Bars



Fibre Glass Rods Kits



Roman Blind Tape



Alternative Operating Chains
 Various colour and size available

Roman Blind General Accessories

Bottom Weight Bars



Aluminium Bottom Weight Bar O-Section 20mm x 3mm
 Silver 300cm Code: 17HVBWB3N
 Silver 600cm Code: 17HVBWB6N
 Packed: 10 Min Qty: 10



Aluminium Bottom Weight Bar O-Section 20mm x 3mm
 White 300cm Code: 17HVBWB3W
 White 600cm Code: 17HVBWB6W
 Packed: 10 Min Qty: 10

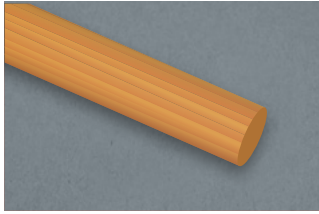


Aluminium Bottom Weight Bar D-Section 20mm x 4mm
 White 300cm Code: 17HVDW3W
 White 600cm Code: 17HVDW6W
 Packed: 10 Min Qty: 10

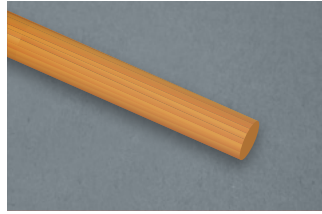


Plastic Bottom Weight Bar Oval 25mm x 8mm
 White 300cm Code: 17BWPL3W
 Packed: 10 Min Qty: 10

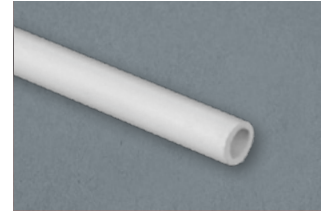
Roman Blind Bars



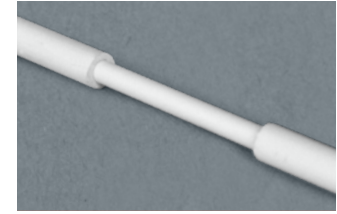
Round Wooden Dowel 240cm length 9mm Diameter
 Code: 17HVD924
 Packed: 30 Min Qty: 30



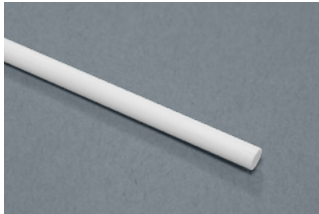
Round Wooden Dowel 240cm length 6mm Diameter
 Code: 17HVD624
 Packed: 30 Min Qty: 30



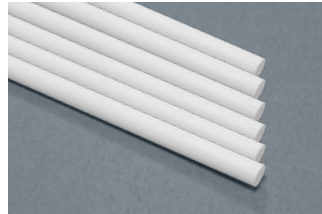
Hollow Plastic Bar 300cm length 6mm Diameter
 Code: 17HVRP3W
 Packed: 10 Min Qty: 10



Hollow Plastic Bar Joiner
 Code: 17HVRPJW
 Packed: 100 Min Qty: 100



Round Fibre Glass Bars Ø 4mm
 300cm Code: 17HVFB3W Packed: 10
 400cm Code: 17HVFB4W Packed: 20
 500cm Code: 17HVFB5W Packed: 20
 600cm Code: 17HVFB6W Packed: 50



Round Fibre Glass Bar Kits x6 bars
 60cm (24") Code: 17HVFB06
 90cm (36") Code: 17HVFB09
 120cm (48") Code: 17HVFB12
 200cm (79") Code: 17HVFB20
 250cm (99") Code: 17HVFB25
 300cm (118") Code: 17HVFB30
 Packed: x6 Bars

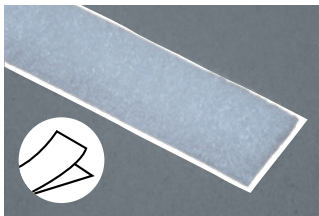


Fibre Glass Bar Cutting Tool
 Code: 17HVBCU
 Packed: Each

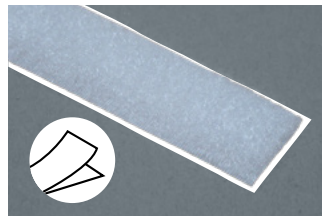


Fibre Glass Bar Caps
 Code: 17FBCECW
 Packed: 100 Min Qty: 100

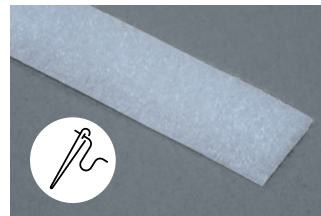
Hook & Loop Tapes



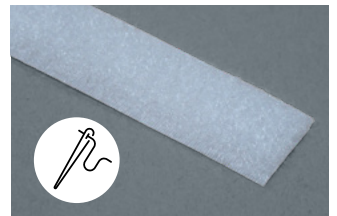
Hook Tape Self Adhesive
 White 20mm (¾") Code: 53C2AHRW
 White 25mm (1") Code: 53C1AHRW
 White 50mm (2") Code: 53C5AHRW
 Black 25mm (1") Code: 53C2AHRK
 Black 50mm (2") Code: 53C5AHRK
 Packed: 25m Roll



Loop Tape Self Adhesive
 White 20mm (¾") Code: 53C2ALRW
 White 25mm (1") Code: 53C1ALRW
 White 50mm (2") Code: 53C5ALRW
 Black 25mm (1") Code: 53C2ALRK
 Black 50mm (2") Code: 53C5ALRK
 Packed: 25m Roll



Hook Tape Sew On
 White 20mm (¾") Code: 53C2SHRW
 White 25mm (1") Code: 53C1SHRW
 White 50mm (2") Code: 53C5SHRW
 Black 25mm (1") Code: 53C2SHRK
 Black 50mm (2") Code: 53C5SHRK
 Packed: 25m Roll



Loop Tape Sew On
 White 20mm (¾") Code: 53C2SLRW
 White 25mm (1") Code: 53C1SLRW
 White 50mm (2") Code: 53C5SLRW
 Black 25mm (1") Code: 53C2SLRK
 Black 50mm (2") Code: 53C5SLRK
 Packed: 25m Roll

Roman Blind Operating Chains

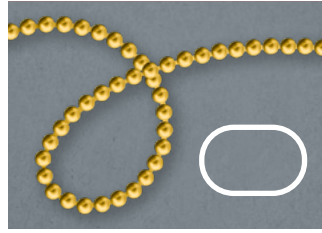
Operating Chains – Metal



Metal Continuous Chain Chrome

- **Drop: 50cm** Code: 17CC05MS
- **Drop: 75cm** Code: 17CC07MS
- **Drop: 100cm** Code: 17CC10MS
- **Drop: 125cm** Code: 17CC12MS
- **Drop: 150cm** Code: 17CC15MS
- **Drop: 175cm** Code: 17CC17MS
- **Drop: 200cm** Code: 17CC20MS
- **Drop: 250cm** Code: 17CC25MS

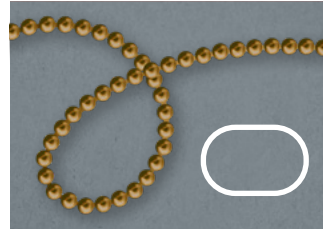
Packed: 10 Min Qty: 10



Metal Continuous Chain Brass

- **Drop: 50cm** Code: 17CC05MB
- **Drop: 75cm** Code: 17CC07MB
- **Drop: 100cm** Code: 17CC10MB
- **Drop: 125cm** Code: 17CC12MB
- **Drop: 150cm** Code: 17CC15MB
- **Drop: 175cm** Code: 17CC17MB
- **Drop: 200cm** Code: 17CC20MB
- **Drop: 250cm** Code: 17CC25MB

Packed: 10 Min Qty: 10



Metal Continuous Chain Antique Brass

- **Drop: 50cm** Code: 17CC05MA
- **Drop: 75cm** Code: 17CC07MA
- **Drop: 100cm** Code: 17CC10MA
- **Drop: 125cm** Code: 17CC12MA
- **Drop: 150cm** Code: 17CC15MA
- **Drop: 175cm** Code: 17CC17MA
- **Drop: 200cm** Code: 17CC20MA
- **Drop: 250cm** Code: 17CC25MA

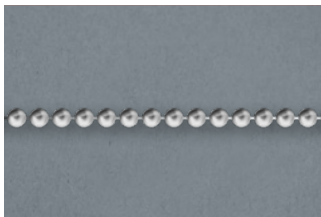
Packed: 10 Min Qty: 10



Metal Continuous Chain Black Nickel

- **Drop: 50cm** Code: 17CC05MI
- **Drop: 75cm** Code: 17CC07MI
- **Drop: 100cm** Code: 17CC10MI
- **Drop: 125cm** Code: 17CC12MI
- **Drop: 150cm** Code: 17CC15MI
- **Drop: 175cm** Code: 17CC17MI
- **Drop: 200cm** Code: 17CC20MI
- **Drop: 250cm** Code: 17CC25MI

Packed: 10 Min Qty: 10



Metal Chain Length per metre

- **Chrome** Code: 17CHMDRS
- **Brass** Code: 17CHMDRB
- **Antique Brass** Code: 17CHMDRA
- **Black Nickel** Code: 17CHMDRI

Min Qty: 10



Metal Chain Connector

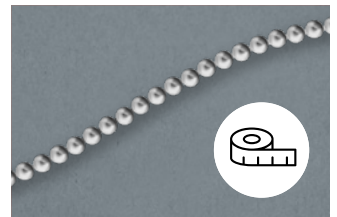
- **Chrome** Code: 17CHOCB
- **Brass** Code: 17CHOCB
- **Antique Brass** Code: 17CHOCA
- **Black Nickel** Code: 17CHOCI

Min Qty: 10



Chain Connector Pliers

Code: 17CHCTOOL



Made-to-Measure Chain Service Charge

- **Chrome** Code: 17CCMTMS
- **Brass** Code: 17CCMTMB
- **Antique Brass** Code: 17CCMTMA
- **Black Nickel** Code: 17CCMTMI

Operating Chains – Plastic



Plastic Continuous Chain Double Ball

- Drop: 100cm** Code: 17CC10DW
- Drop: 150cm** Code: 17CC15DW
- Drop: 200cm** Code: 17CC20DW

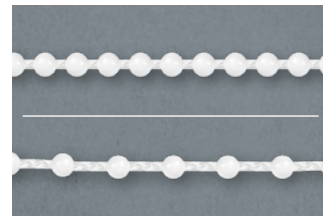
Packed: 10 Min Qty: 10



Plastic Continuous Chain Spaced Ball

- Drop: 50cm** Code: 17CC050W
- Drop: 75cm** Code: 17CC075W
- Drop: 100cm** Code: 17CC100W
- Drop: 150cm** Code: 17CC150W
- Drop: 200cm** Code: 17CC200W

Packed: 10 Min Qty: 10



Reel of Plastic Chain

- Double Ball** Code: 17CHPDRW
- Spaced Ball** Code: 17CHPSRW

Packed: 10 Min Qty: 10

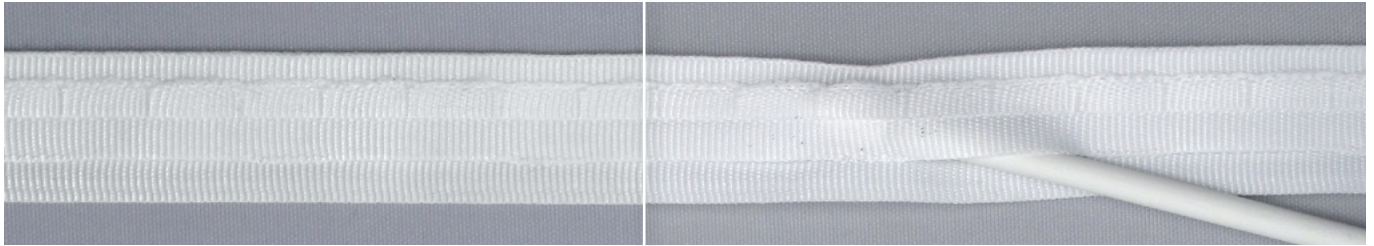


Plastic Chain Connector

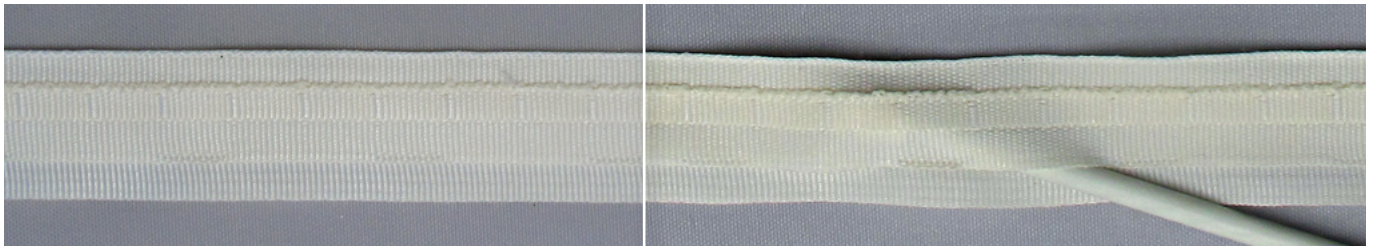
Code: 17CC100W
Packed: 10 Min Qty: 10

Roman Blind Tapes Slotted & Non-Slotted

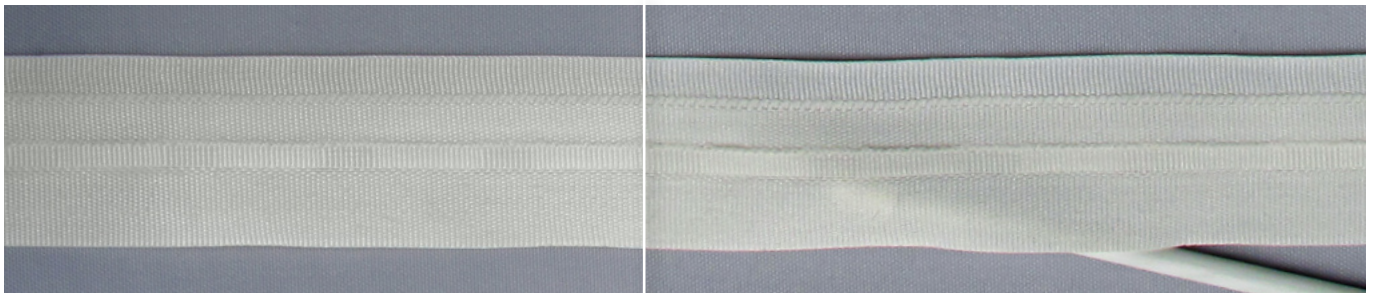
Roman Blind Tapes Slotted



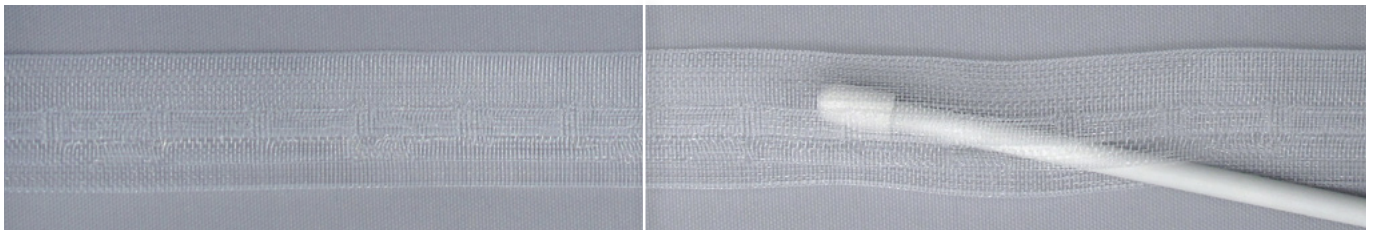
Spooled Roman Blind Tape 20mm (3/4") White **Code:** 50TRBWPC **Packed:** 100m roll **Bars Accepted:** Fibreglass, Plastic & Wood Dowel (6mm & 9mm)
Spooled Roman Blind Tape 20mm (3/4") White **Code:** 50TRBWPK **Packed:** 1000m Lapped **Bars Accepted:** Fibreglass, Plastic & Wood Dowel (6mm & 9mm)



Spooled Roman Blind Tape 20mm (3/4") Cream **Code:** 50TRBCPC **Packed:** 100m roll **Bars Accepted:** Fibreglass, Plastic & Wood Dowel (6mm & 9mm)
Spooled Roman Blind Tape 20mm (3/4") Cream **Code:** 50TRBCPK **Packed:** 1000m Lapped **Bars Accepted:** Fibreglass, Plastic & Wood Dowel (6mm & 9mm)

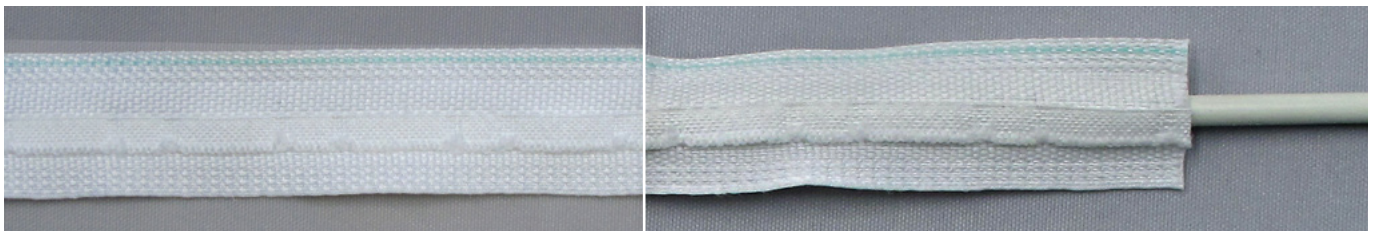


Boxed Roman Blind Tape 26mm (1") Cream **Code:** 50TRBCBC **Packed:** 100m roll **Bars Accepted:** Fibreglass, Plastic & Wood Dowel (6mm & 9mm)



Roman Blind Tape For Voiles 18mm (3/4") Transparent **Code:** 51TRBTRR **Packed:** 200m roll **Bars Accepted:** Fibreglass, Plastic & Wood Dowel (6mm only)

Roman Blind Tapes Non-Slotted



Select Roman Blind Tape 20mm (3/4") White **Code:** 50TRBWSC **Packed:** 100m roll **Bars Accepted:** Fibreglass, Plastic & Wood Dowel (6mm only)



Select Roman Blind Tape 20mm (3/4") Cream **Code:** 50TRBCSC **Packed:** 100m roll **Bars Accepted:** Fibreglass, Plastic & Wood Dowel (6mm only)

CHILD SAFETY

When it comes to ligatures, Child Safety is paramount. That's why we supply industry approved Child Safety devices on all our cord and chain operated Tracks and Blinds. **You're in safe hands with Renaissance.**



Child Safety Devices For Rear Cords



Sew-in Adjustable Cord Stopper

Packed: 100 Code: 58WACSCC
Packed: 1000 Code: 58WACKCK



Clip-in/Sew-in Adjustable Cord Stopper

Packed: 100 Code: 58WACCCC
Packed: 1000 Code: 58WACKCK



Rear Sew-In Cord Release

Packed: 100 Code: 58CSSRCT
Packed: 1000 Code: 58CSSRKT



Rear Sew-In Cord Break

Packed: 100 Code: 58CSCBKT
Packed: 1000 Code: 58CSCBCT



Rear Clip-In Cord Release

Packed: 100 Code: 58CSBACT
Packed: 1000 Code: 58CSBAKT

Child Safety Chain Tensioners & P-Clip



Plastic Chain Tensioner

Packed: 10 Code: 18CTCTPW



Metal Chain Tensioner

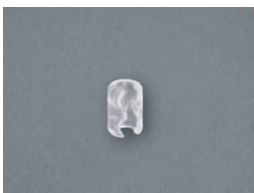
Packed: 10 Code: 18CTCTMW



Clear 'P-Clip' Safety Guide

Packed: 100 Code: 58WASCLL

Child Safety Devices For Chains



Roman Blind Chain Break

Packed: 100 Code: 58CSCHCT
Packed: 1000 Code: 58CSCHKT



Safety Box Double Chain

Packed: 100 Code: 58WASBDB



Safety Box Single Chain

Packed: 100 Code: 58WASBSG

Child Safety Warning Labels



Safety Warning Tag

Packed: 100 Code: 58WASTST



Safety Warning Label Roll

Packed: Roll of 100
 Code: 58WASWLA

RENAISSANCE

An introduction brochure to our Deluxe Collections & Contract Solutions, with product overviews, technical details, case studies and much more.



DELUXE COLLECTION

Designer ranges with the wow factor for when you need to impress

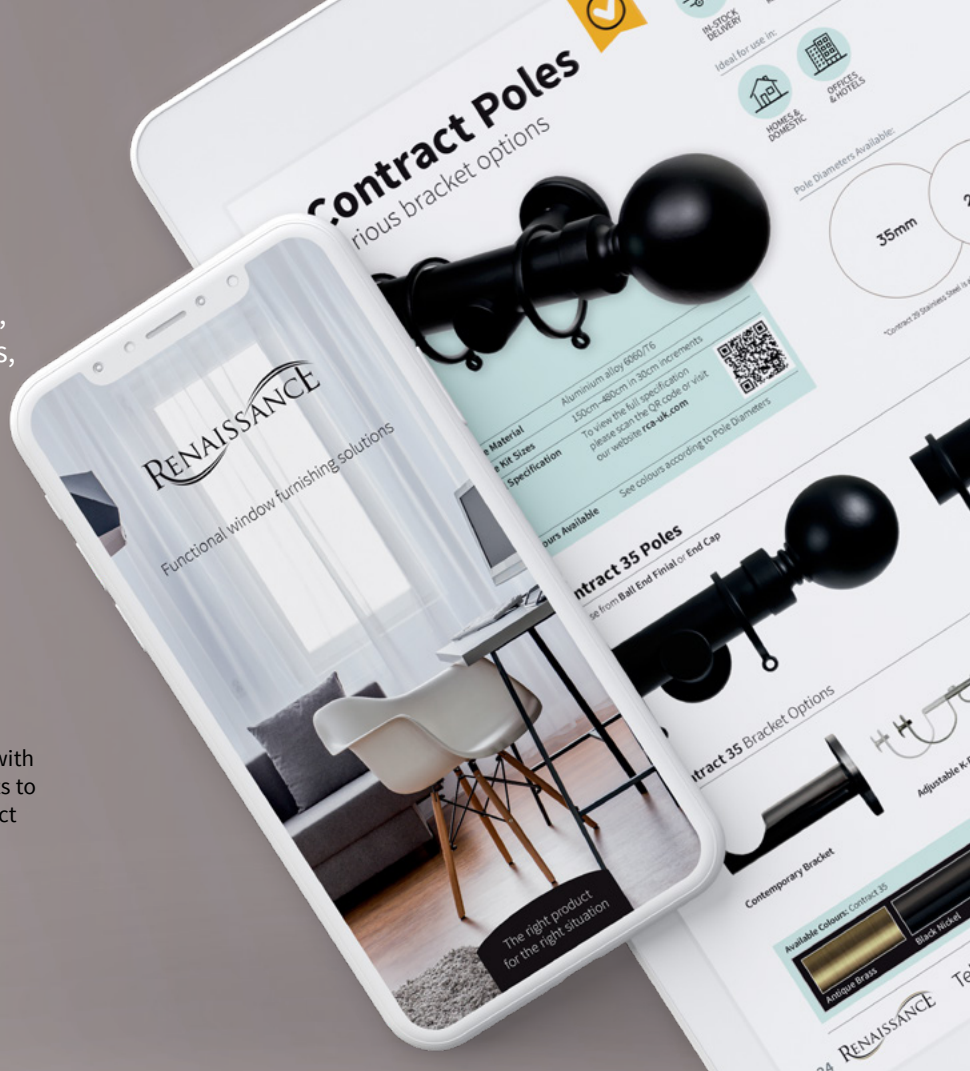


CONTRACT SOLUTIONS

High-grade products with adaptable components to optimise your project



Scan the QR code to download a PDF copy or visit rca-uk.com



Essentials™

Workroom Accessories Guide



Scan the QR code to download a PDF copy or visit rca-uk.com