



RENAISSANCE



Making it Home™

Cirrus™

Our beautiful Cirrus Vertical Blinds have an attractive watermark wave design.

- ✓ Durable heavy-weight vanes
- ✓ Drop can be easily trimmed
- ✓ Wall or ceiling fix clip-brackets

Available Drops

140cm (54")
240cm (94")

VERTICAL BLINDS



IN-STORE CUT TO LENGTH

Spare Chain & Clips

89mm or 127mm Spacing

Packed: 250m Roll

89mm Code: 67VCH09PW

127mm Code: 67VCH13PW



PACKED LOOSE

Spare Vane Bottom Weights

89mm or 127mm Widths

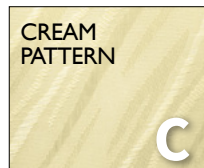
Packed: Box of 300/Outer 1

89mm Code: 67VBW09CW

127mm Code: 67VBW13CW

COLOUR OPTIONS

Please substitute '___' in the **Order Code** with your colour ref letters of choice



SIZE OPTIONS

Available Widths	No. of Brackets	No. of Vanes	140cm Drop Order Code	240cm Drop Order Code
60cm (24")	2	8	67VES060_	67VEL060_
90cm (36")	2	12	67VES090_	67VEL090_
120cm (47")	3	15	67VES120_	67VEL120_
150cm (59")	3	19	67VES150_	67VEL150_
180cm (71")	3	23	67VES180_	67VEL180_
210cm (83")	4	27	67VES210_	67VEL210_
240cm (94")	4	30	67VES240_	67VEL240_

Packed: Each/Outer 4

SPECIFICATION

Heavy duty, top quality, complete vertical blind kit including all components, aluminium headrail, vanes and weights, with instructions included for fitting. Can be trimmed to size, width & length.

Features include:

- Strong aluminium headrail
- Clip-on adjustable wall or ceiling-fix brackets
- Hand drawn with draw rod
- Vane tilt control
- Vane weights with connecting chains included
- Vane width 89mm (3 1/2")
- All sizes can be trimmed width & drop
- Left or Right-hand draw (not centre split)



Renaissance Vertical Blinds are compliant and tested to BS EN 13120:2009+A1:2014 Child Safety Standards.