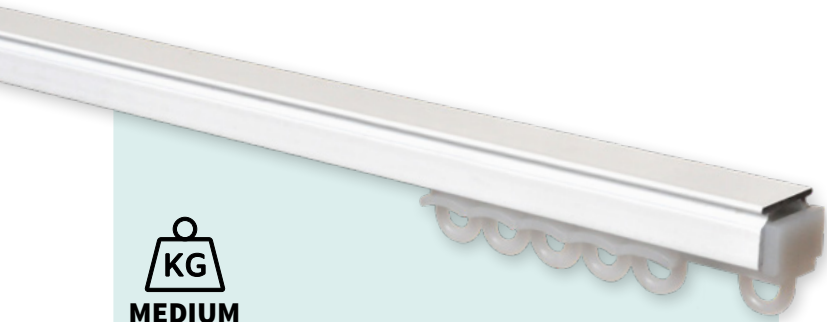




W-Section

Aluminium Track



MEDIUM

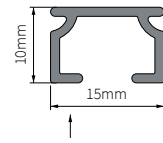
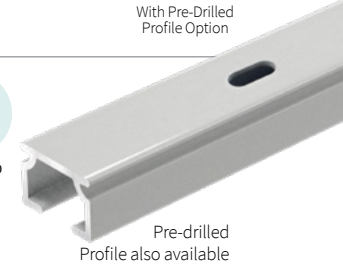
Material	Aluminium alloy 6060/T6
Weight	116 g/m
Track Sizes	6m single lengths only
Bending	This track cannot be bent
Additional Details	Ceiling brackets are required for SurgeWave use. W-Section Profile is also available with pre-drilled holes every 22cm. Note: Pre-drilled W-Section is NOT SurgeWave compatible.
Track Maintenance	We recommend that the track is kept clean and dust free. Re-siliconisation is also recommended to prolong the smooth running of the gliders

Key Features:

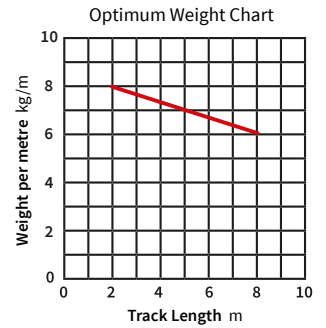
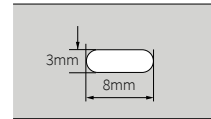
- 6mm**
GROOVE SIZE
- SURGE WAVE**
SURGE WAVE COMPATIBLE
- IN-STOCK**
DELIVERY
- MADE TO**
MEASURE
- KITS**
AVAILABLE
- ANGLE**
BEND
- CONTINUOUS**
CURVE
- NOTE:** Bending is not available on Pre-Drilled W-Section Profile Track
- DIRECT FIT**
NO BRACKETS
With Pre-Drilled Profile Option

Ideal for use in:

- HOMES &**
DOMESTIC
- OFFICES &**
HOTELS
- CONFINED**
SPACES



Also Available as Pre-drilled profile with holes every 22cm.



W-Section Kit Components & Options

Kits include:

- W-Section Profile Track**
- End Stopper x2**
With Screw & Eye
- Ceiling Brackets[†]**
† For Wall Fix add L-Extension Brackets to your order
- Wall Fix option**

Glider Options:

- Standard Gliders**
For 6mm Groove
- 6mm Surge Gliders on a String**
Choose 60mm or 80mm spacing

W-Section Complete Kits

Components	Track Kit Sizes							
	1.00m (3'3")	1.50m (4'11")	2.00m (6'7")	2.50m (8'2")	3.00m* (9'10")	4.00m* (13'1")	5.00m* (16'5")	6.00m* (19'8")
Non-Drilled Track	1 x 1.00m	1 x 1.50m	1 x 2.00m	1 x 2.50m	2 x 1.50m	2 x 2.00m	2 x 2.50m	2 x 3.00m
Ceiling Brackets [∅]	3	4	5	6	7	9	11	13
End Caps	2	2	2	2	2	2	2	2
Standard Gliders [^]	10	16	20	26	30	40	50	60
Standard Kit Code[†]	16WSUS100_	16WSUS150_	16WSUS200_	16WSUS250_	16WSUS300_	16WSUS400_	16WSUS500_	16WSUS600_
60mm Surge Code[†]	16WSU6100_	16WSU6150_	16WSU6200_	16WSU6250_	16WSU6300_	16WSU6400_	16WSU6500_	16WSU6600_
80mm Surge Code[†]	16WSU8100_	16WSU8150_	16WSU8200_	16WSU8250_	16WSU8300_	16WSU8400_	16WSU8500_	16WSU8600_

Packed: 1 px/Outer 5 **Min Qty:** 1

*Denotes 2 piece profile with joiner. All kits include fittings. [^] For Surge the gliders are replaced with gliders on a string. **NOTE:** Ceiling Brackets must be used if using Surge. Pre-drilled Profile Kits are also available but **do not** include Brackets. [∅] For wall fix option order L-Extension Brackets separately.

[†] Colours Available Insert your chosen colour letter reference at end of the Kit Codes.

W	K
White	Black