

# Roman Blind Closed Cassette Lift Rail System

with Clip-In Adjustable Cord Stopper with Hole

## Preparation and Fixing Instructions



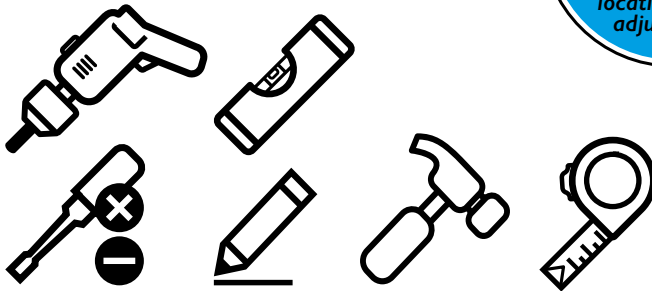
RENAISSANCE



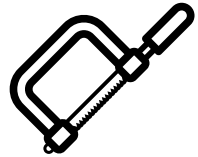
**NEW FAST-FIT  
CORD ROLLERS**

For time-saving fast  
locating & easy  
adjustments

### Tools required for installation:



To adjust rail length:



Please read all safety warning instructions before installation and Keep them in a safe place for future reference.

## How to shorten the rail size

### Step 1

Remove the end cap from the headrail (at the opposite end from the control end with the chain).



### Step 3

Mark the distance you want to remove and using a saw, cut through the headrail and tiltrod.

**Tip:** Move the roller to just before cut point, this supports the axle bar for easier cutting



### Step 2

Unlock and slide back cord roller unit using the cord to pull it away from the end you will be cutting (to unlock simply twist the clear tab 90°).



### Step 4

Once cut, put the end cap back in place and reposition and secure the cord roller (to lock simply twist the clear tab back 90°).



Keep these instructions in a safe place for future reference

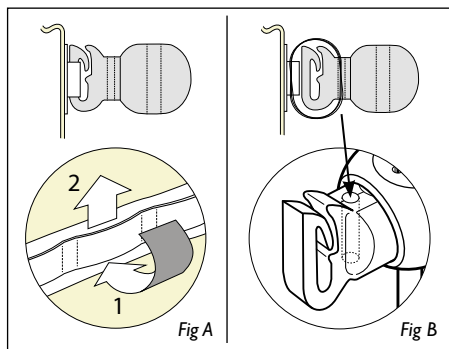
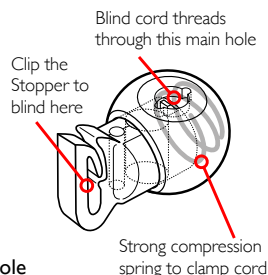
# Assembly instructions and use of child safety devices

**SAFETY DEVICES MUST BE USED TO 'MAKE IT SAFE' FOR COMPLIANCE**

1. Place the blind face down and place the rail onto the soft loop tape heading on your blind (see *fig 4 below*). Line-up the cord rollers – to adjust positions twist the lock mechanism to unlock and twist back to re-lock in the desired place. Ensure all cords are fully unwound and equal length.
2. Clip the **Clip-In Adjustable Cord Stoppers with Hole** into the tape on bottom fold (*Fig A*). Alternatively you can sew-in to the bottom fold through the small hole in the Cord Stopper close to the clip (*Fig B*) – See the back page of these instructions for full positioning details.
3. Thread cords through the guides in the tape which has been sewn on to each of the folds in the rear of the Blind and then through the main hole in the **Clip-In Adjustable Cord Stopper with Hole**.
4. Do **NOT** tie a knot in the lifting cords as this will compromise the safety feature of the device.
5. Confirm chain is the correct drop for the fitting requirements and safety compliance – change if required. Ensure the Safety Cord Guide is fitted.

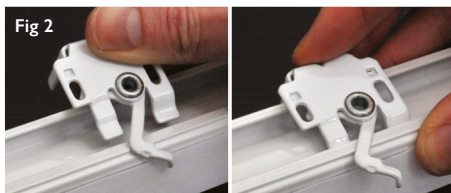
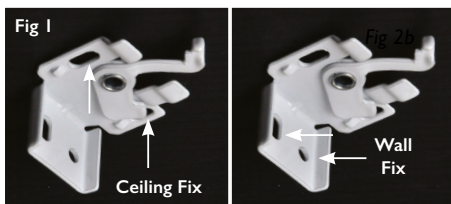


Clip-In Adjustable Cord Stopper with Hole



## Headrail installation instructions

1. Mark bracket hole positions on the wall or ceiling (*Fig 1*).
2. Drill holes and fix bracket in place using screws provided.
3. Take the assembled blind & headrail and detach the top of the blind from the headrail (*Fig 4*).
4. Place the headrail profile up to brackets. Tilt the headrail forwards and insert into bracket, then tilt back to the straight position to ensure the bracket has 'clicked' firmly in place (*Fig 2*).
5. Secure the headrail by moving the locking arms into place (*Fig 3*).
6. Affix the top of the blind back to the headrail (*Fig 4*).



# Installing the Safety Cord Guide and chain tensioning

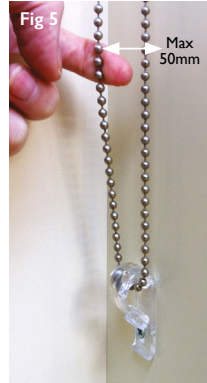
**CHAIN LOOPS MUST BE SECURE TO 'MAKE IT SAFE' FOR COMPLIANCE**

Fix the **Safety Cord Guide** (supplied) in place to secure the chain loop and to 'make it safe'.

1. Position safety device ensuring chain/cord loop is taut. Check with your hand between wall and chain/cord the distance from the wall does not exceed 50mm. (Fig 5).
2. Mark on the wall the position for fixing through the hole in device – adjust via the hole at the bottom to get tension. (Fig 6).
3. Drill hole and fix accordingly – the hole in the device is slotted so that the tension of the chain loop can be adjusted. (Fig 7).
4. The safety device **must** be fitted more than 1.5m from floor level or less than 1.0m from the top of the blind if the top of the blind is below 2.5m. You may need to change the chain to a shorter length in order to comply to safety standards BS EN 13120.
5. Warning notices should be left on the chain for the notice of the end user.



**Safety Cord Guide (58WASCCCL)**



**CHILD SAFETY IS MANDATORY! ALL CHAINS & LOOPS MUST BE SECURED**

## WARNING

**Young children can be strangled by loops in pull cords, chains, tapes and inner cords that operate the product.**

To avoid strangulation and entanglement, keep cords out of the reach of young children. Cords may become wrapped around a child's neck. Move beds, cots and furniture away from window covering cords.

Do not tie cords together. Make sure cords do not twist and create a loop.

**NOTE:** Fitting guidelines state that the safety device should keep the chain taut and should not be fitted less than 1.5m from floor level or less than 1.0m from the top of the blind if the top of the blind is below 2.5m. Make sure that the loop is not slack.

Go to [www.makeitsafe.org.uk](http://www.makeitsafe.org.uk) for further details.



For more information visit [rca-uk.com/childsafety](http://rca-uk.com/childsafety)



**make it safe**

It is the responsibility of both the blind maker and installer to check and confirm the blind is safe according to the standards.

# Positioning of Child Safety Devices

Fig 1

