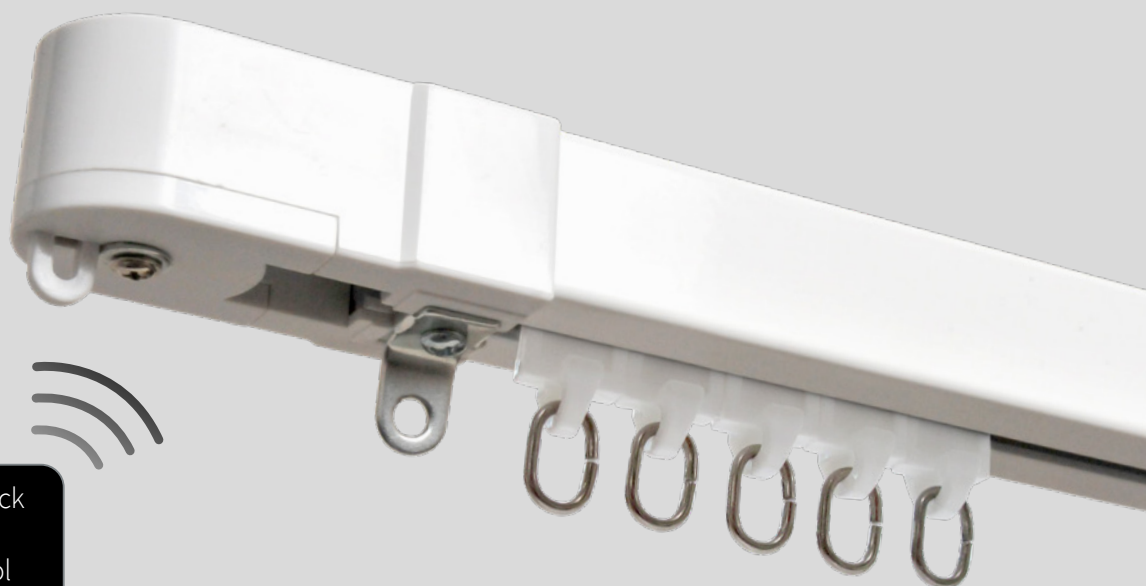


Glide-Aside® Motorised Track

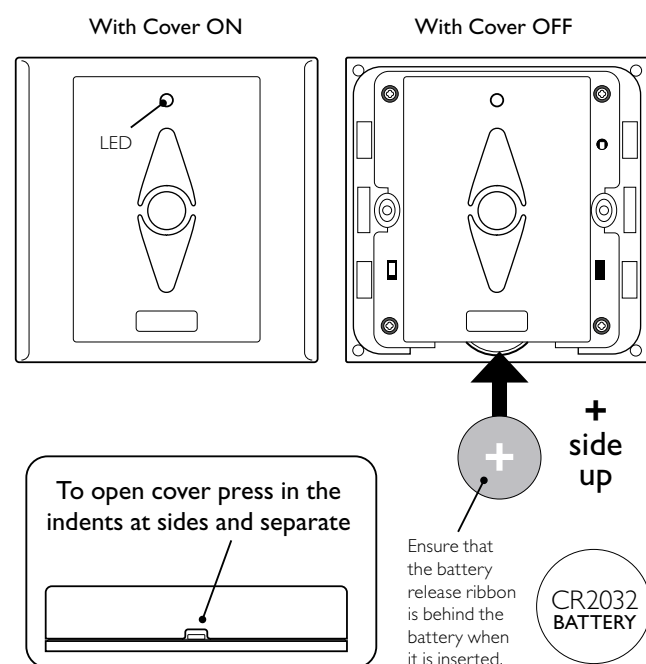
Remote Programming & Operating Instructions

RENAISSANCE

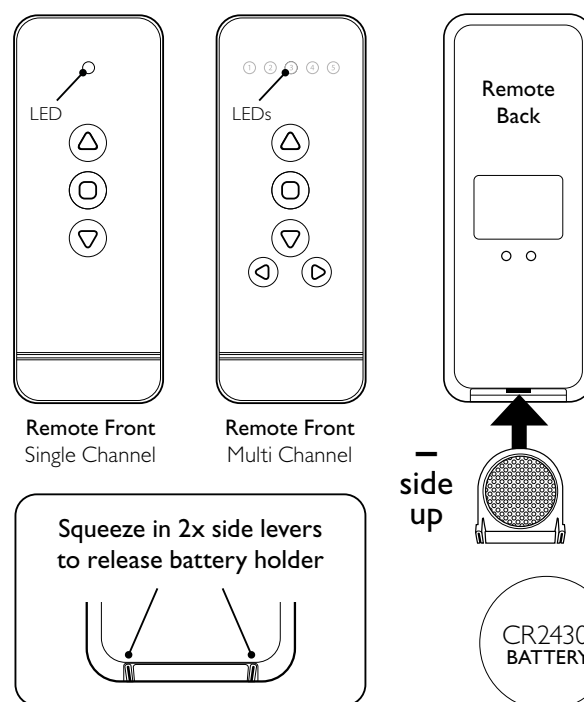


NOTE: Your Glide-Aside track will be supplied with either a Handheld Remote Control or a Wall-mounted Switch Remote options for controlling your track. Please follow the appropriate option as shown over the following pages.

Battery Setup Wall-Mounted Switch Remote



Battery Setup Handheld Remote



Note: To check if your battery is correctly installed / in working order simply push a button and the LED on the front will light up.

RENAISSANCE

Tel **0113 250 4499** • Email **sales@rca-uk.com** • Visit **rca-uk.com**

Programming your remote Wall-Mounted Switch Remote

NOTE: You should set the **OPEN & CLOSE LIMITS** when connecting to power for the first time. Ensure the remote LED lights up when a button is pressed – if not then your battery may be flat!

1.1 First, connect the Glide-Aside Track motor to your power supply and turn on at the mains. The motor will beep quickly 5 times to confirm it is on.

1.2 Press **CLOSE** (UP) key on your Remote – the motor on the track should start – if there is no response go to step **1.8** to reconnect your remote and start again once it is connected and working.

1.3 The curtains will run to the end position on the rail and the motor will automatically stop. The Close Limit is now set.

1.4 Now Press **OPEN** (DOWN) on your Remote. **NOTE:** You can also draw the curtain by hand – the tug motion will automatically start the motor.

1.5 The curtains will run to the beginning position on the rail and the motor will automatically stop. The Open Limit is now set.

1.6 Now the limit settings are set you can use the Open/Close buttons to move to the automatically set limits – you can stop the motor to have the curtains partly open with the **STOP** key at any time.

To Reset Open & Close Limits

1.7 Using a paperclip/small screwdriver, press and hold the **RESET** button on the base of the motor.

To Reconnect your Remote

1.8 Using a paperclip or small screwdriver, press and hold in the **SETTING** button on the base of the motor for 3 seconds until the motor beeps, then release. Discovery Mode is now activated.

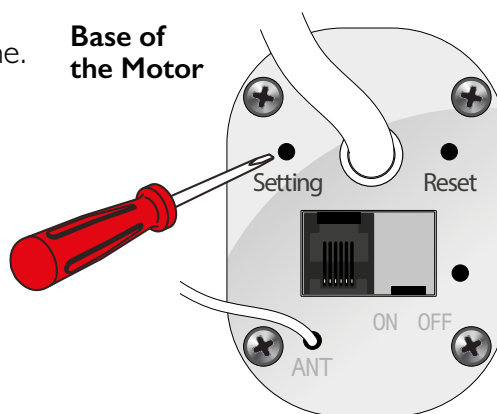
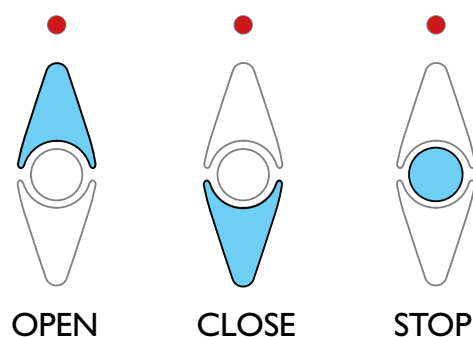
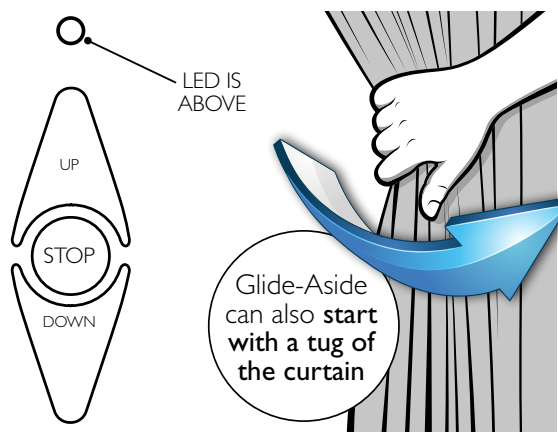
Press & hold for 3 seconds then release

The motor will make long beeps with a gap
This means discovery mode is **activated***

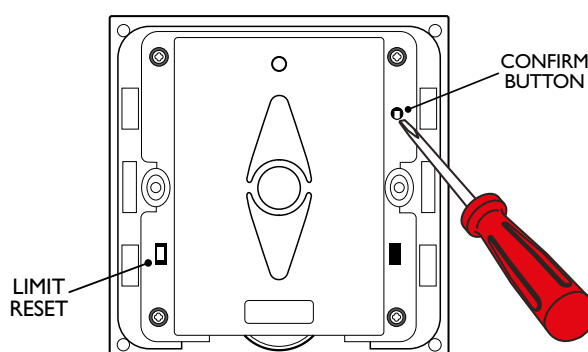
Continue to Press & Hold for 7 seconds

Motor will beep quickly 8 times then go silent
All limit settings have now been DELETED.

1.9 Now press the **CONFIRM** button with a paperclip on the inside of your Wall switch. The motor will beep 4 times to confirm pairing.



Wall-mounted Switch – cover OFF



Programming your remote Handheld Remote – Single Channel

NOTE: You should set the **OPEN & CLOSE LIMITS** when connecting to power for the first time. Ensure the remote LED lights up when a button is pressed – if not then your battery may be flat!

2.1 First, connect the Glide-Aside Track motor to your power supply and turn on at the mains. The motor will beep quickly 5 times to confirm it is on.

2.2 Press **CLOSE** (UP) key on your Remote – the motor on the track should start – if there is no response go to step **2.8** to reconnect your remote and start again once it is connected and working.

2.3 The curtains will run to the end position on the rail and the motor will automatically stop. The Close Limit is now set.

2.4 Now Press **OPEN** (DOWN) on your Remote. **NOTE:** You can also draw the curtain by hand – the tug motion will automatically start the motor.

2.5 The curtains will run to the beginning position on the rail and the motor will automatically stop. The Open Limit is now set.

2.6 Now the limit settings are set you can use the Open/Close buttons to move to the automatically set limits – you can stop the motor to have the curtains partly open with the **STOP** key at any time.

To Reset Open & Close Limits

2.7 Using a paperclip/small screwdriver press and hold the **RESET** button on the base of the motor.

To Reconnect your Remote

2.8 Using a paperclip or small screwdriver, press and hold in the **SETTING** button on the base of the motor for 3 seconds until the motor beeps, then release. Discovery Mode is now activated.

Press & hold for 3 seconds then release

The motor will make long beeps with a gap
This means discovery mode is **activated***

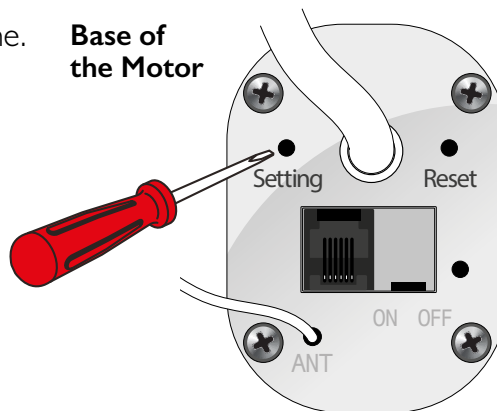
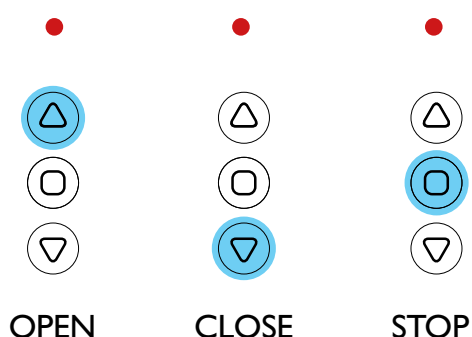
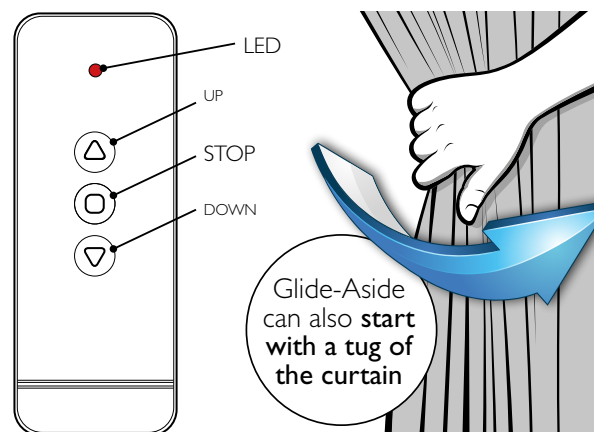
Continue to Press & Hold for 7 seconds

Motor will beep quickly 8 times then go silent

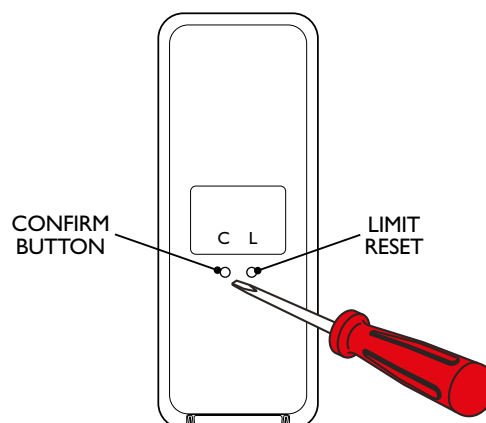
All limit settings have now been DELETED.

2.9 Now press the **CONFIRM** button with a paperclip on the back of your Handheld Remote. The motor will beep 4 times to confirm pairing.

** Discovery Mode remains active and motor will continue to beep for 25 seconds ONLY. If you run out of time, simply repeat the process again.*



Back of Handheld Remote Control



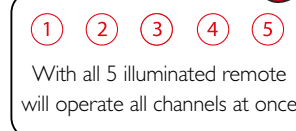
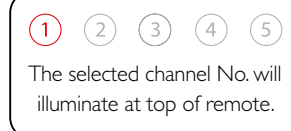
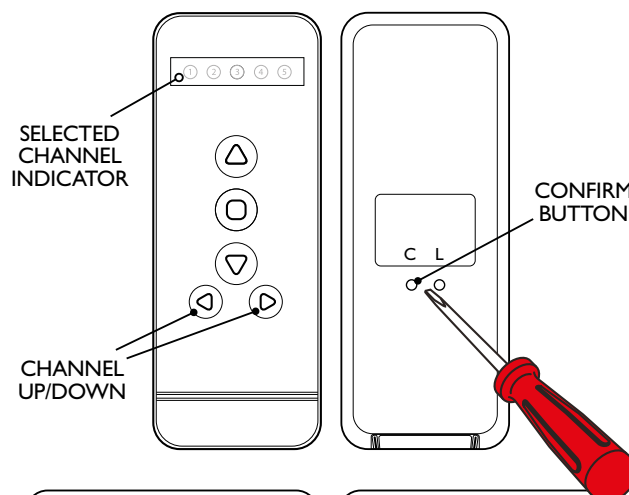
Programming your remote Handheld Remote – Multi Channel

NOTE: The programming/setup process for the Multi Channel remote is the same as that for the Single Channel remote – the only difference being you need to select the specific channel you want to operate your chosen Glide-Aside track first.

3.1 Use the left and right arrows on the remote to move UP/DOWN between the 5 channel options until you reach your desired channel – the top of the remote will illuminate the chosen channel number – select 1 channel **ONLY** (not all 5).

3.2 Once the chosen channel is selected you can now connect the Glide-Aside motor to that channel.

3.3 Using a paperclip or small screwdriver press and hold in the **SETTING** button on the base of the motor for 3 seconds until the motor beeps then release. Discovery Mode is now activated.



Press & hold for 3 seconds then release

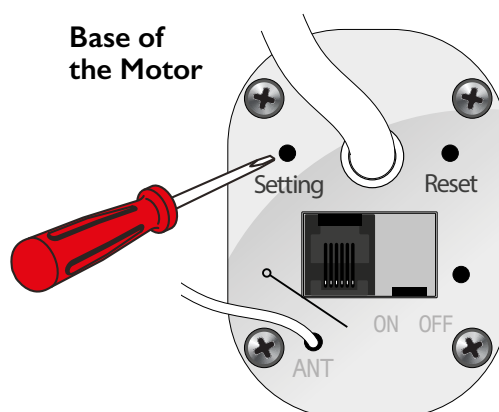
The motor will make long beeps with a gap
This means discovery mode is **activated***

Continue to Press & Hold for 7 seconds

Motor will beep quickly 8 times then go silent
All limit settings have now been DELETED.

3.4 Now press the **CONFIRM** button with a paperclip on the inside of your Wall switch. The motor will beep 4 times to confirm pairing.

3.5 Now follow steps **2.2** to **2.6** to set your limits.



* Discovery Mode remains active and motor will continue to beep for 25 seconds ONLY. If you run out of time, simply repeat the process again.

NOTE: You should set the **OPEN & CLOSE LIMITS** when connecting to power for the first time. Ensure the remote LED lights up when a button is pressed – if not then your battery may be flat!

2.1 First, connect the Glide-Aside Track motor to your power supply and turn on at the mains. The motor will beep quickly 5 times to confirm it is on.

2.2 Press **CLOSE** (UP) key on your Remote – the motor on the track should start – if there is no response go to step **2.8** to reconnect your remote and start again once it is connected and working.

2.3 The curtains will run to the end position on the rail and the motor will automatically stop. The Close Limit is now set.

2.4 Now Press **OPEN** (DOWN) on your Remote. **NOTE:** You can also draw the curtain by hand – the tug motion will automatically start the motor.

2.5 The curtains will run to the beginning position on the rail and the motor will automatically stop. The Open Limit is now set.

2.6 Now the limit settings are set you can use the Open/Close buttons to move to the automatically set limits – you can stop the motor to have the curtains partly open with the **STOP** key at any time.

To Reset Open & Close Limits

2.7 Using a paperclip/small screwdriver press and hold the **RESET** button on the base of the motor.

To Reconnect your Remote

2.8 Using a paperclip or small screwdriver, press and hold in the **SETTING** button on the base of the motor for 3 seconds until the motor beeps, then release. Discovery Mode is now activated.

Press & hold for 3 seconds then release

The motor will make long beeps with a gap
This means discovery mode is **activated***

Continue to Press & Hold for 7 seconds

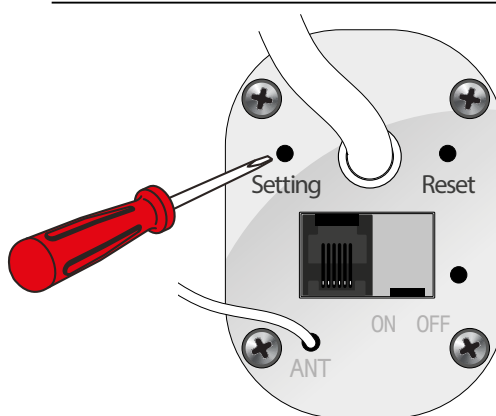
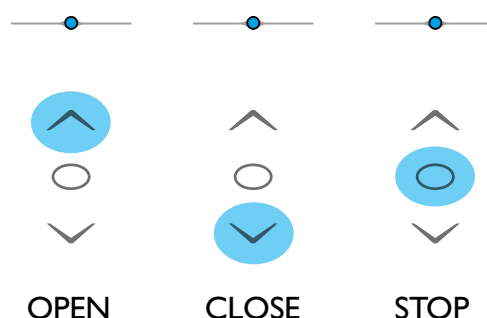
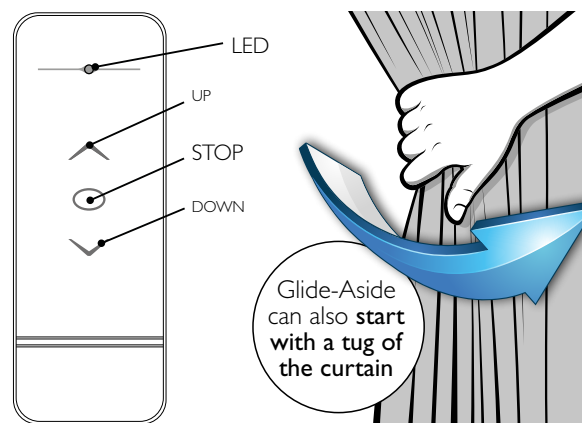
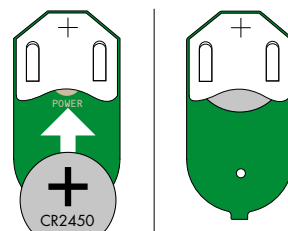
Motor will beep quickly 8 times then go silent
All limit settings have now been DELETED.

2.9 Now press the **CONFIRM** button located on the bottom of your Handheld Remote Control. The motor will beep 4 times to confirm pairing.

** Discovery Mode remains active and motor will continue to beep for 25 seconds ONLY. If you run out of time, simply repeat the process again.*

Battery Setup

To insert the Battery into your Handheld Remote Control by simply sliding down the back and lift off to reveal the power slot



Bottom of Handheld Remote Control

