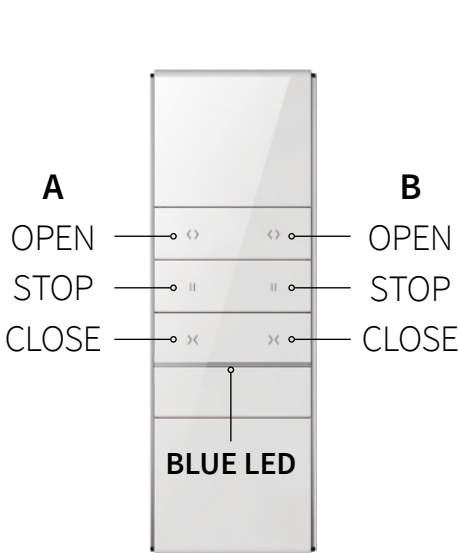
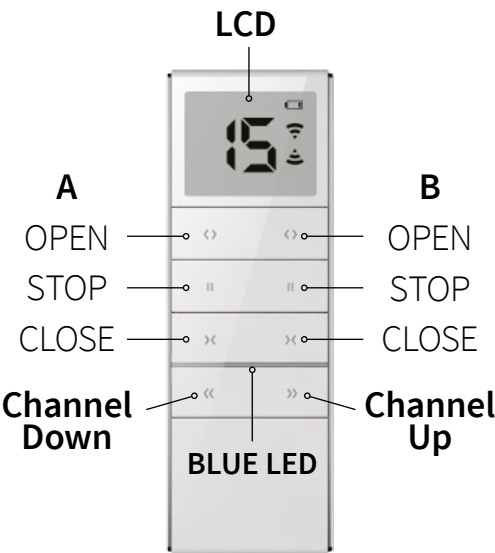


Glide-Aside® Motorised Track

Compatible with Glide-Aside® 2nd generation motors from January 2023



Dual Channel Remote
Model: 16GAAT1W



LCD 15-Channel Dual Remote
Model: 16GAAT15W

Remote Battery Insertion/Replacement*

Back of Remote

Back of Remote

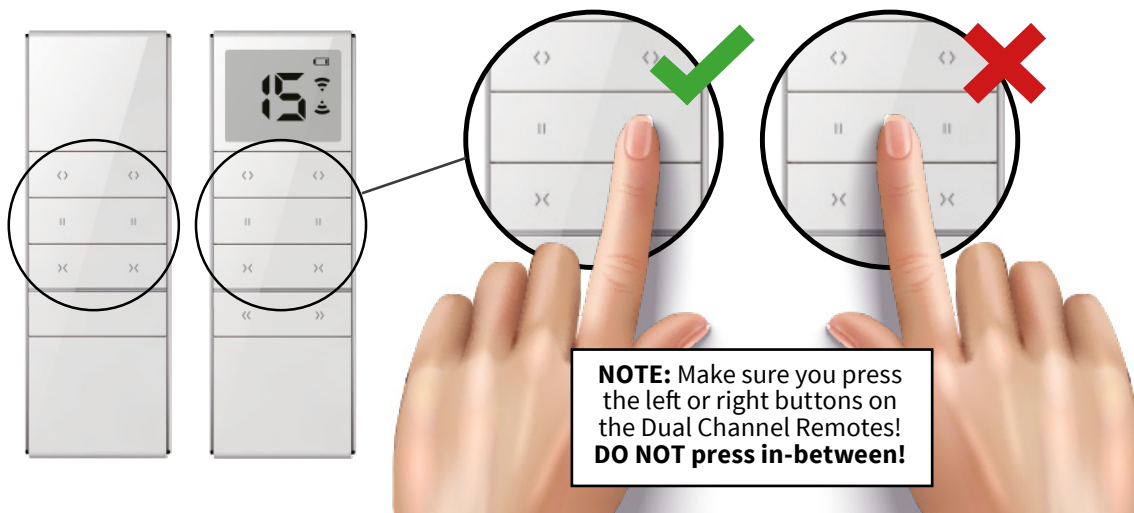
Use a tool (such as a sim card pin, paper clip or mini screw driver) to press the small release button and push the battery cover down to open.

Battery Type: CR2450 3V	Battery Life: 2 Years Approx.	Radio Frequency: 433.05~434.79MHz
Working temperature: -10°C~50°C	Transmitting Power: <10mW	Radio Range: 200m Outdoors or 35m Indoor Use

*Please read **Battery Warning & General Usage Advice** on the last page of these instructions.

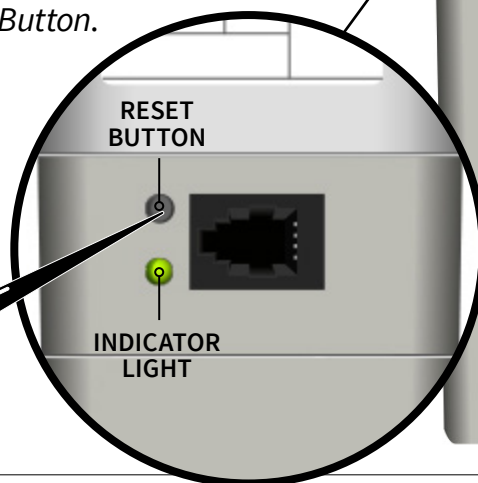
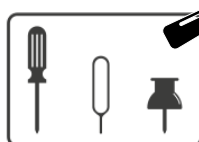
Pairing Remotes to Glide-Aside Battery Power Motor

1. Choose the left or right channel you want to pair on your Remote.
For LCD Multi-Channel Remotes you will also have to select a channel No. from 1 to 15 too. **Note Channel 0 is not an option!**



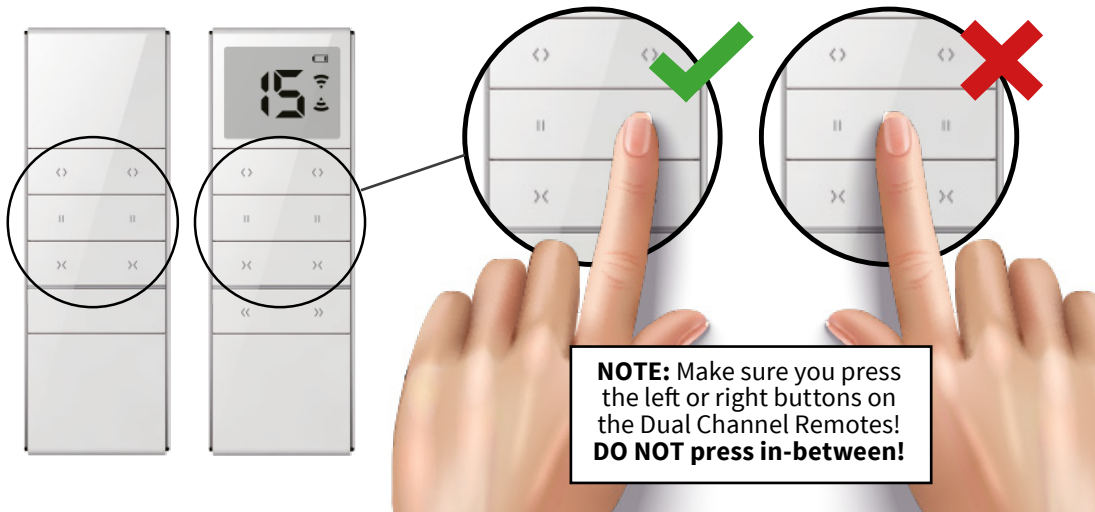
2. Ensure that your Motor Battery is fully charged.
3. Connect the charged Battery to the Motor and locate the motor reset button and indicator light (as shown below).
4. **To clear and reset to default:** Press and hold the reset button down for around 10 secs until the green indicator light has flashed 3 times – then release – the motor will beep 3 times. The motor is now fully reset.
5. **To pair a Remote: Read all the steps fully before you start**
Press and hold the *Reset Button* down for around 3 secs until the green *Indicator Light* has flashed once only – then release – the motor will beep once also.
6. The motor is now ready to link to a new remote for the next 5 seconds only. Act quick – press and hold down the *Stop Button* on the remote channel you want to link for around 3 secs.
7. The Motor will beep 3 times and the green *Indicator Light* will also flash 3 times – now release your remote *Stop Button*.
8. Your remote is now paired and ready to use.

NOTE: If you want to add additional Remotes or make the other channel on a Dual Remote active for the same motor just repeat steps 5 to 8.



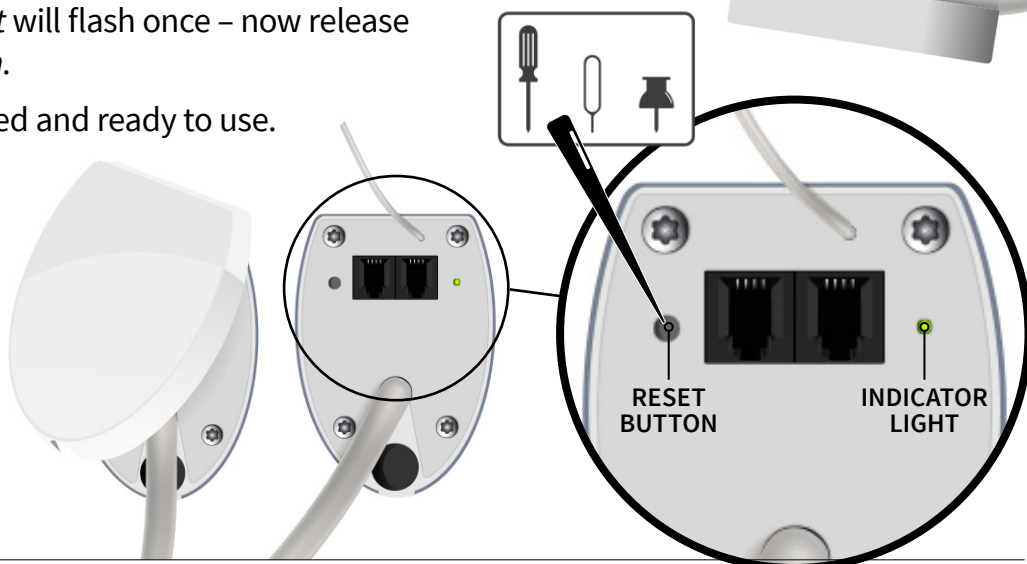
Pairing Remotes to Glide-Aside Mains Power Motor

1. Choose the left or right channel you want to pair on your Remote.
For LCD Multi-Channel Remotes you will also have to select a channel No. from 1 to 15 too. **Note Channel 0 is not an option!**



2. Ensure that your wired motor is plugged into the mains.
3. Remove the cap at the base of the motor to reveal the motor *Reset Button* and *Indicator Light* (as shown below).
4. **To clear and reset to default:** Press and hold the *Reset Button* down for around 10 secs until the green *Indicator Light* has flashed 4 times – it will then rapidly flash 5 times – then release. The motor is now fully reset.
5. **To pair a Remote: Read all the steps fully before you start**
Press and hold the *Reset Button* down for around 3 secs until the green indicator light has flashed once only – then release.
6. The motor is now ready to link to a new remote for the next 5 seconds only. Act quick – press and hold down the *Stop Button* on the remote channel you want to link for around 3 secs.
7. The green *Indicator Light* will flash once – now release your remote *Stop Button*.
8. Your remote is now paired and ready to use.

NOTE: If you want to add additional Remotes or make the other channel on a Dual Remote active for the same motor just repeat steps 5 to 8.



Battery Warning & Remote General Usage Advice

1. Do not expose your remote to moisture.
2. Do not drop or strike the remote as it may cause damage.
3. Ensure to use ONLY the battery type stated within these instructions.
4. If your remote is acting strangely or the range becomes shorter – please change battery.
5. If battery voltage is less than 2.6V a low voltage indicator will show (LCD version only) – please change battery.
6. Please ensure you dispose of used batteries at appropriate recycle facilities.