



Veltrack

Curtain Blackout Solution

Using Standard Ceiling Fix Brackets to fix Veltrack either side of the window, curtains can be held flush to the wall to prevent light coming through.

Key Features:



IN-STOCK
DELIVERY



MADE TO
MEASURE



SURGE
WAVE
COMPATIBLE

Ideal for use in:



HOMES &
DOMESTIC

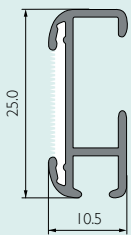
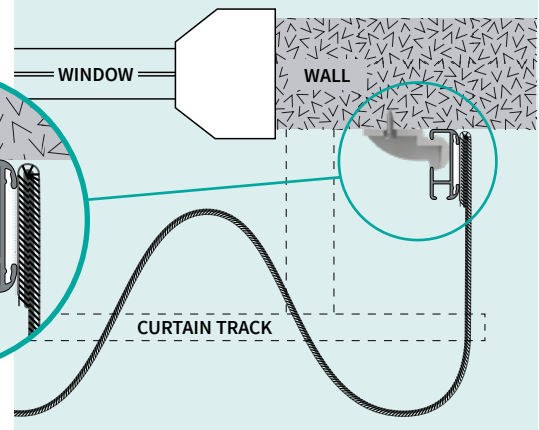


OFFICES
& HOTELS

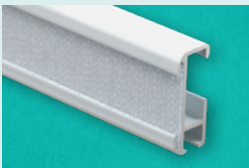
How it works

(see page 3 for full details)

Veltrack shown with SurgeWave System Track viewed from above



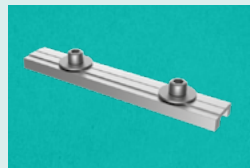
Material	Aluminium alloy 6060/T6
Track Sizes	3m and 6m single lengths available



Veltrack Profile



Veltrack End Cap



Veltrack Joiner



Standard Ceiling Bracket
(with Hole)



Loop Tape



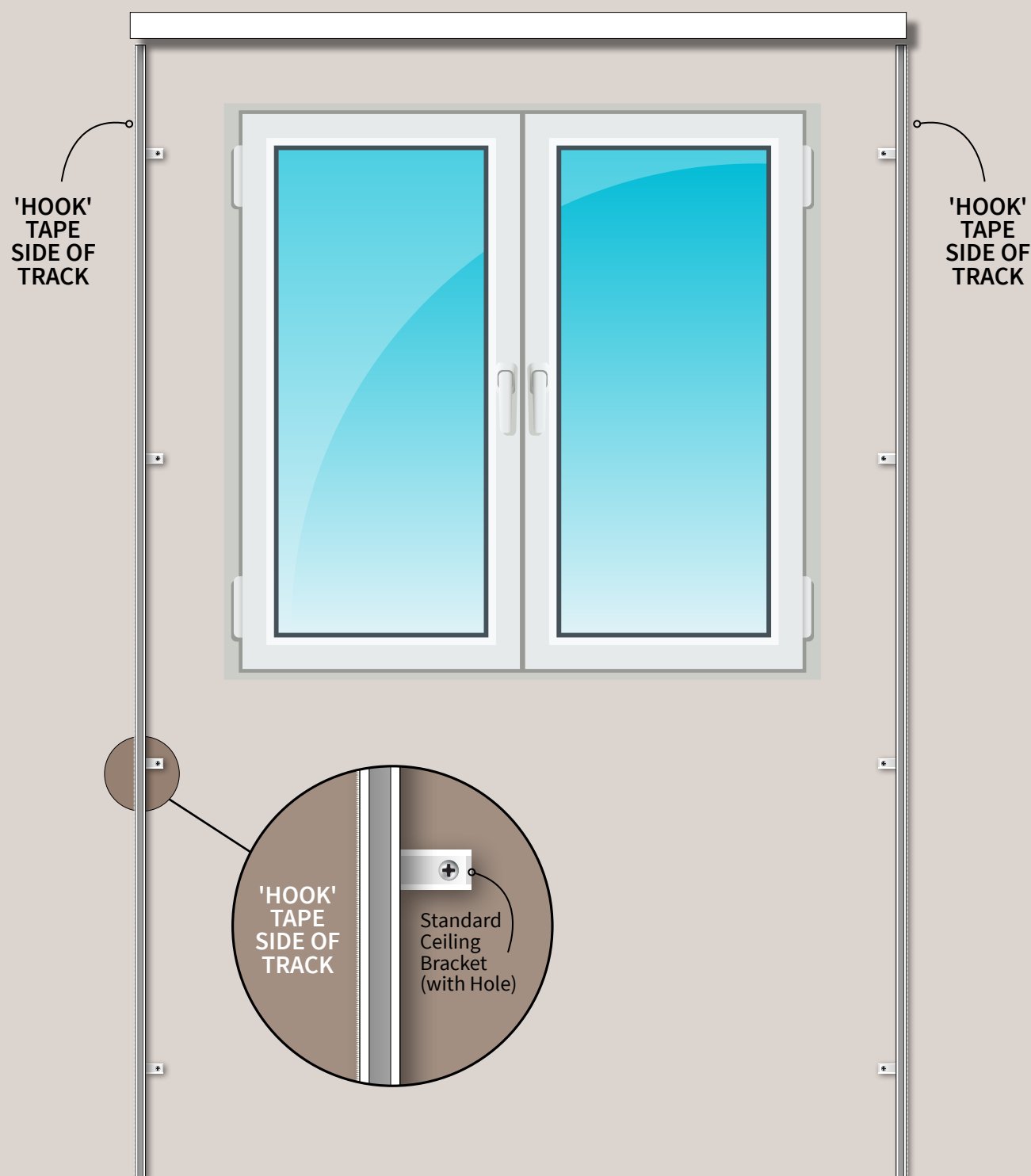
Create perfect
blackout conditions
with **Veltrack**

Veltrack Curtain Blackout Solution

How to install

Install your lengths of Veltrack running vertically each side of your window frame with 'Hook' side of the Hook & Loop Tape of the Rail facing outside – as shown below.

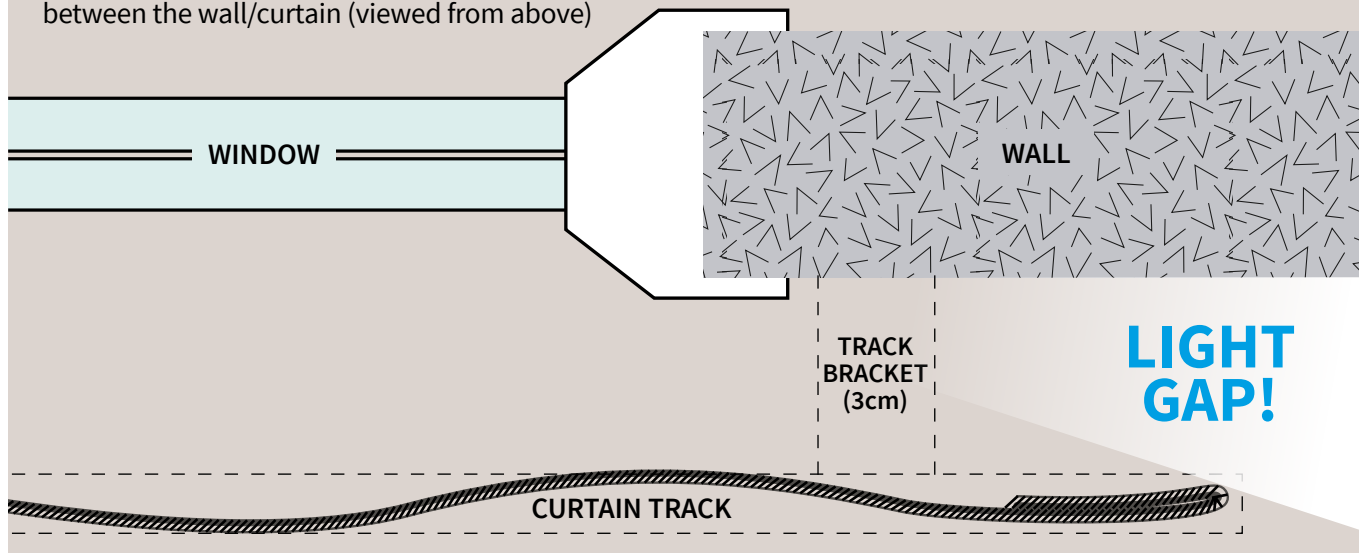
With the 'Loop' side of the Hook & Loop Tape sewn to the outside edge of your curtains which can now be neatly held in place on the rail, flush to the wall.



Veltrack Curtain Blackout Solution

How it works Standard Track

Standard hanging curtains allow light to escape between the wall/curtain (viewed from above)



How it works Veltrack + SurgeWave System Track

With Veltrack and SurgeWave System now installed your curtains are neatly held in place flush to the wall. **No more light gap!**

