

# Velcra<sup>®</sup>rail

## Curtain Blackout Solution

Using Standard Ceiling Fix Brackets to fix Velcra<sup>®</sup>rail either side of the window, curtains can be held flush to the wall to prevent light coming through.

### Key Features:



IN-STOCK  
DELIVERY



MADE TO  
MEASURE



SURGE  
WAVE  
COMPATIBLE

### Ideal for use in:



HOMES &  
DOMESTIC

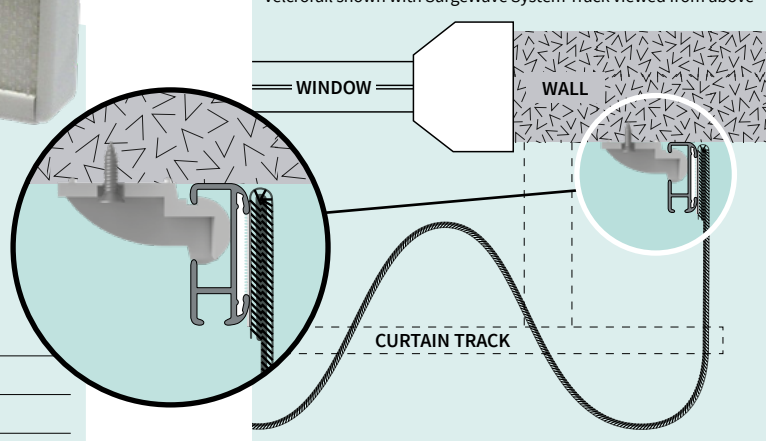


OFFICES  
& HOTELS

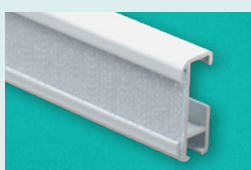
### How it works

(see page 3 for full details)

Velcra<sup>®</sup>rail shown with SurgeWave System Track viewed from above



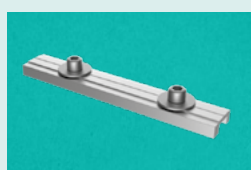
<b>Material</b>	Aluminium alloy 6060/T6
<b>Track Sizes</b>	3m and 6m single lengths available



Velcra<sup>®</sup>rail Track



Velcra<sup>®</sup>rail End Cap



Velcra<sup>®</sup>rail Joiner



Standard Ceiling Bracket  
(with Hole)



Loop Tape



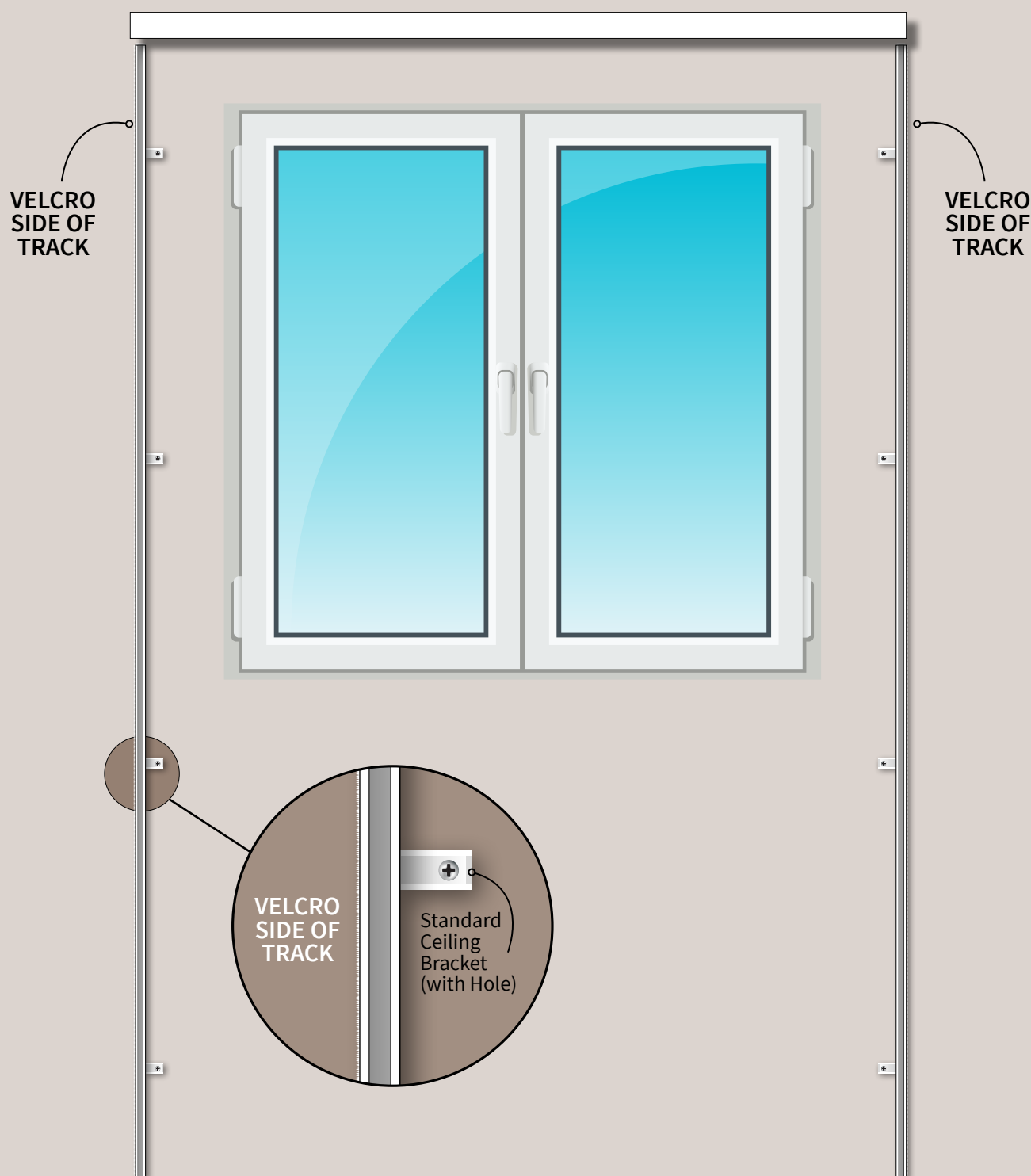
Create perfect  
blackout conditions  
with **Velcra<sup>®</sup>rail**

## Velcrorail Curtain Blackout Solution

### How to install

Install your lengths of Velcrorail running vertically each side of your window frame with Velcro Hook side of the Rail facing outside – as shown below.

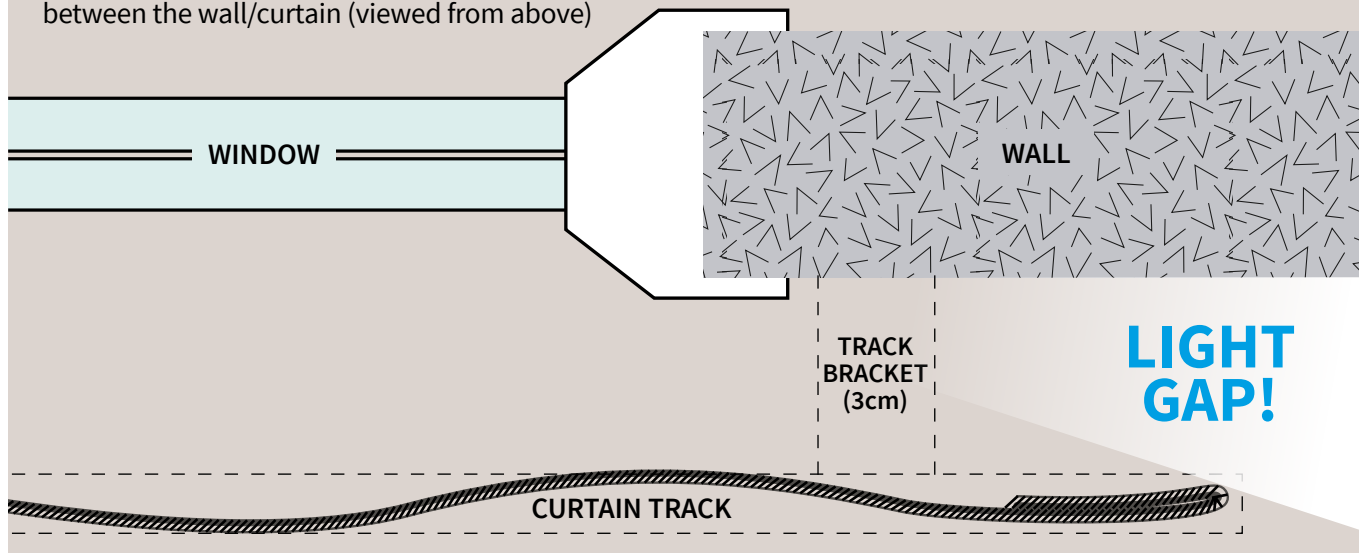
With the Loop side of the Hook & Loop Tape sewn to the outside edge of your curtains which can now be neatly held in place on the rail, flush to the wall.



## Velcrorail Curtain Blackout Solution

### How it works Standard Track

Standard hanging curtains allow light to escape between the wall/curtain (viewed from above)



### How it works Velcrorail + SurgeWave System Track

With Velcrorail and SurgeWave System now installed your curtains are neatly held in place flush to the wall. **No more light gap!**

