

Compliance Declaration

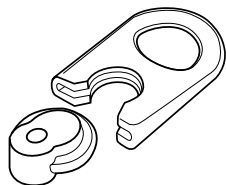


This is to confirm that the following products being sold by Renaissance Curtain Accessories have been tested in compliance with BS EN 16434

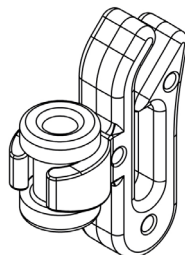
Description: **Sew-In Base Cord Break**
 Part codes: **58CSCBCT** Qty: Outer 100
58CSCBKT Qty: Outer 1000
 Date tested: **22 Sept 2014**

Suitable for use with:

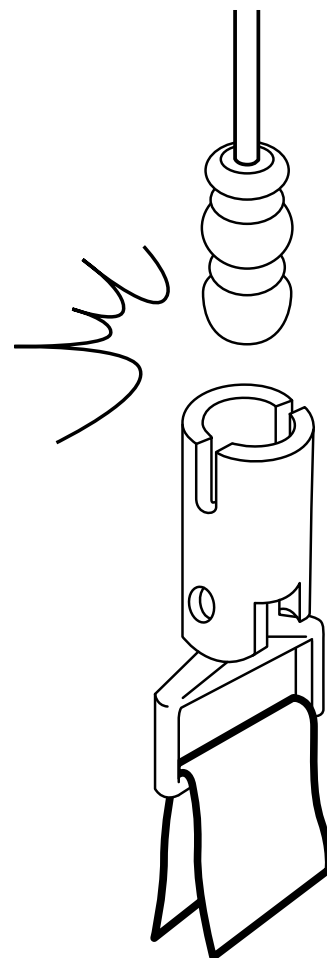
- Renaissance Closed Cassette Roman Blind Kits and components for manufacture.
- Also suitable for use with other manufacturer's components.
- This product should be used in conjunction with:
 - Sew-In Rear Cord Release (58CSSRCT/KT) or;
 - Clip-In Rear Cord Release (58CSBACT/KT)



Sew-In Rear Cord Release
58CSSRCT Qty: Outer 100
58CSSRKT Qty: Outer 1000



Clip-In Rear Cord Release
58CSBACT Qty: Outer 100
58CSBAKT Qty: Outer 1000



Drawings not to scale

