

Compliance Declaration

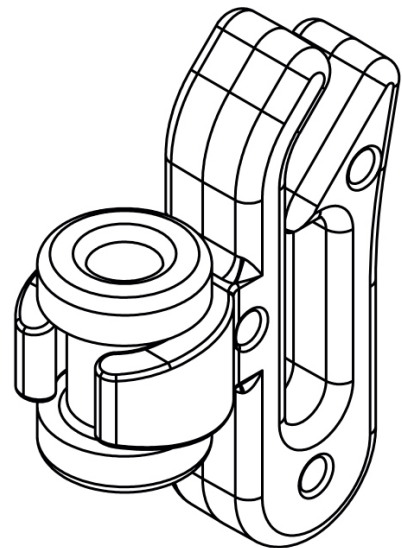


This is to certify that the following products being sold by Renaissance Curtain Accessories have been tested in compliance with BS EN 16434.

Description: **Clip-In Rear Cord Release**
Part codes: **58CSBACT** Qty: Outer 100
58CSBAKT Qty: Outer 1000
Date tested: **23 Dec 2013**

Suitable for a maximum 1.4mm Cord

Renaissance Closed Cassette Roman Blind Kits contain 1.0mm Cord and are suitable for use with this product.



Drawing not to scale

Tested in accordance with BS EN16434.

prEN 16434:2012 – Internal blinds – Protection from strangulation hazards
– Requirements and Test methods for safety devices.



REN086-02/7-REV/5-0315